

# abc Deluxe Retractable Lateral Arm Awning



If you are looking for a retractable awning to enhance your home and handle the weather we have here in Hawaii look no further. We offer one of the most reliable time proven lateral arm awning systems available today. It typically installs in a day and will change your functional home space forever.

Tropical Js offers the Deluxe lateral arm retractable awning, an awning that was developed in Sweden by EGE Westin AB. This system incorporates the latest advancements including a variable pitch adjustment for the arms and an energy absorbing shoulder.

Standard operation is by smooth German Geiger bevel gears and crank, or by optional Somfy 500 or 600 series motors depending of the size of the unit. Motors can be operated by switch or remote control. Motorized option also allows for wind, rain, and 3D motion sensors, to help you close the awning when it should be closed.

Arms are constructed utilizing double tensioned springs connected to the forearm with stainless steel chain. The torsion bar, front bar, roller tube, wall and hood brackets and arm profiles are all manufactured with powder coated extruded highquality aluminum.

Other cheaper awnings use lighter extrusions for the frame, non stainless springs for the arms or fabrics with less warranty. This leads to premature frame failure, or decreased frame performance over time. When the fabric wears out on these types of systems, the entire system usually needs to be replaced (if it has even made it that far to begin with).

Our installations and systems have been working great in Hawaii for over 20 years and because we are local, we can service your product or parts if it needs repair. It is also not uncommon for us to replace the fabric on one of our awnings when the fabric reaches the end of its life.

Linear Width 5' 1" to 40' 0"

Projection 4'1", 5'9", 6'10", 8'6", 10'2", 12'

Frame Finish Powder Coated

Frame Colors ☐ White ☐ Sand ☐ Bronze

Mounting Options Wall, Soffit, Roof (with brackets)

Roller Tube 78mm

Torsion Bar 35mm

Pitch Adjustment 0° to 45°

Fabric Protection Optional Hood with side covers

Unit Operation Manual or Somfy Motor

Motor Controls Wireless Hand or Wall Switches

Retractable Valance Manual up to 4' Drop

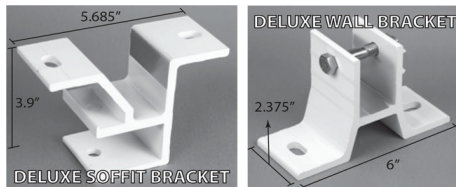
Fabric Options Sunbrella Fabric 10 Year Warranty

Valance Options 9 standard choices

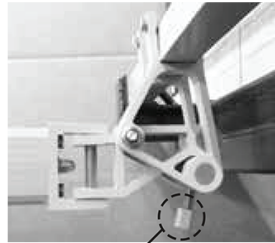
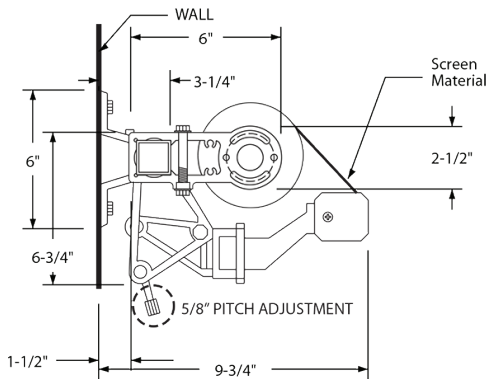


1052 Ulupono Street Honolulu HI 96819  
ph: 808.848.0888 fax: 808.847.3893

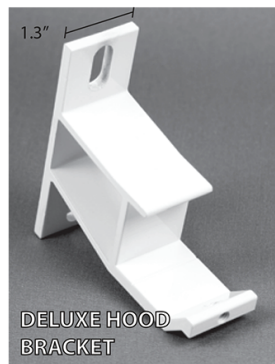
## Valance Styles:



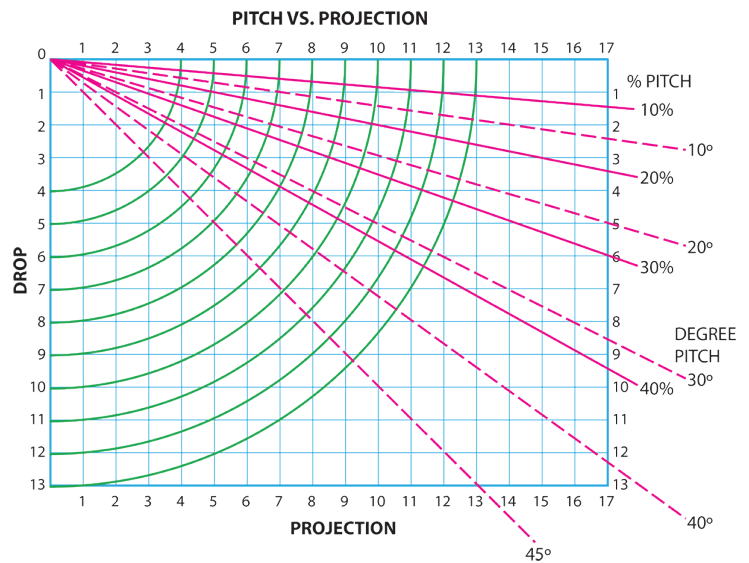
WALL FIX REQUIRED SPACE



5/8" PITCH ADJUSTMENT



DELUXE HOOD BRACKET



Go to your projection at the top of the chart and follow the green curve to at least the 20° pink dashed line. At that intersection, go to the left and find the manufacturer's recommended minimum drop. We should not set awnings with a slope less than this.

## Pitch

The pitch of the awning can be adjusted during the year to provide maximum shading effect as the sun travels with the seasons. We recommend always maintaining a minimum 20 degree pitch to allow the awning to shed water. This should be taken into account when positioning the awning on the mounting surface as this will affect the position of the front bar relative to the ground. The chart above demonstrates the impact of pitch on the projection of the awning and drop of the front bar.

## Table of Wind Resistance Classes

### CLASS & WIND STRENGTH (BEAUFORT) - EUROPEAN STANDARD EN13561

- Class 0 Wind Strength (Beaufort): 1-3 ( light air to gentle breeze) Up to 19 km/h (1-8 mph)-Leaves and thin twigs are constantly moving.
- Class 1 Wind Strength (Beaufort): 4 (moderate breeze) 20-28 km/h (13-17 mph)-Twigs and thin branches bend and waste paper is raised from the ground.
- Class 2 Wind Strength (Beaufort): 5 (fresh breeze) 29-38 km/h (18-24 mph) -Moderate size branches sway and small bushes are shaken.
- Class 3 Wind Strength (Beaufort): 6 (strong breeze) 39-49 km/h (25-30 mph) -Thick branches sway and umbrellas are difficult to hold.

Awnings are essentially intended to protect you from the sun and should be retracted when it rains. Our awnings are constructed of materials of sufficient strength and the cover is so resistant to vagaries of the weather that they may remain extended during light rain showers without suffering any damage provided that their pitch is sufficient to allow water to runoff of the awning and thereby preventing pooling of water between the arms. A minimum pitch of at least 20 degrees must be maintained and the cover has to be taut (this can be achieved by retracting the awning 2-3" after extending the awning to its full projection thus increasing the tension the arms are exerting on the fabric). An awning cover that has been rolled up while wet should be extended and allowed to dry when weather conditions permit and allowed to dry prior to retracting.