

# Shan - Retractable Lateral Arm Awning



SHAN is a state-of-the-art cassette awning. When it comes to your house or establishment, you want a cassette awning that works perfectly and shades without compromising the aesthetic line. SHAN meets all these requirements and fully integrates with the architecture. The SHAN uses the patented feature arm URBAN, the essence of the most advanced technology and fine Italian design. It features the innovative Dynamic Arm Torsion System, which helps to protect the torsion mechanism and to prevent fabric tears.

Because of its marked shape and design, the SHAN is wall mount only and always motorized. The D.T.S. system (Dynamic Tilting System) allows the tilting of the support when the awning is retracting, maintaining a perfect closure of the cassette. The special gasket along the length of the front bar makes the awning watertight and ensures silent closure. The compact box dimension is 10.16" in height and 7.28" deep. A single section is up to 23' (276") width and can reach a 13'6" (162") projection.

Because the system is a cassette style, it is only available in a motorized option using Somfy wired motors with Somfy wireless control technology.

Other cheaper awnings use lighter extrusions for the frame, non stainless springs for the arms or fabrics with less warranty. This leads to premature frame failure, or decreased frame performance over time. When the fabric wears out on these types of systems, the entire system usually needs to be replaced (if it has even made it that far to begin with).

Our installations and systems have been working great in Hawaii for over 20 years and because we are local, we can service your product or parts if it needs repair. It is also not uncommon for us to replace the fabric on one of our awnings when the fabric reaches the end of its life.

Linear Width 5' 1" to 23' 0"

Projection 8' 4", 10', 11' 6", 13' 6"

Frame Finish Powder Coated

Frame Colors ☐ White ☒ Corten ☐ Anthracite

Mounting Options Wall mount only

Pitch Adjustment 0° to 40°

Fabric Protection Integrated Cassete Box

Unit Operation Somfy Motor ONLY

Motor Controls Wireless Hand or Wall Switches

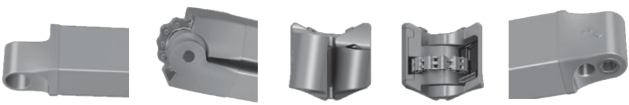
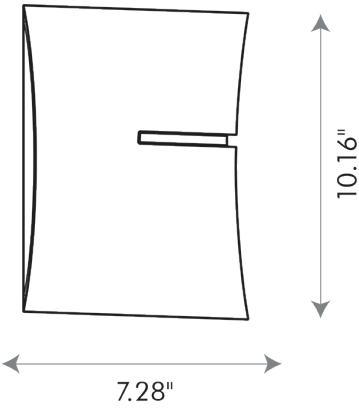
Fabric Options Tempotest Solid 10 Year Warranty

Valance Options No Valance options

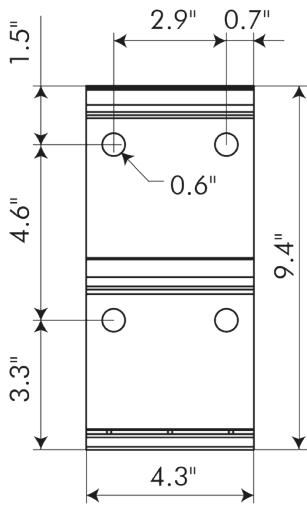


1052 Ulupono Street Honolulu HI 96819  
ph: 808.848.0888 fax: 808.847.3893

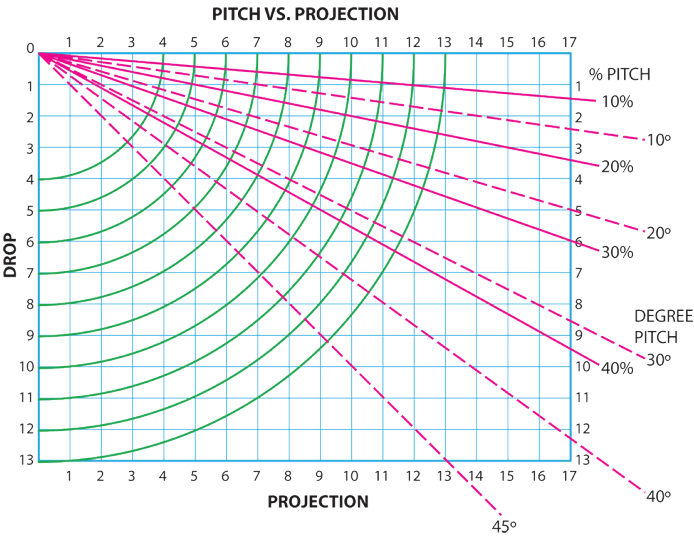
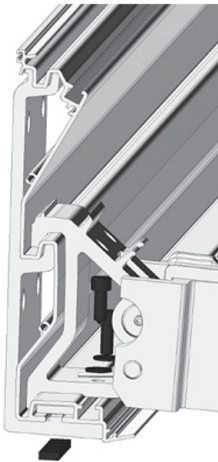
**Shan profile dimensions  
with folded arms**  
wall installation



**Shan wall bracket  
dimensions**



**Shan wall bracket  
installed side view**



**Pitch**

The pitch of the awning can be adjusted during the year to provide maximum shading effect as the sun travels with the seasons. We recommend always maintaining a minimum 20 degree pitch to allow the awning to shed water. This should be taken into account when positioning the awning on the mounting surface as this will affect the position of the front bar relative to the ground. The chart above demonstrates the impact of pitch on the projection of the awning and drop of the front bar.

**Table of Wind Resistance Classes**

CLASS & WIND STRENGTH (BEAUFORT) - EUROPEAN STANDARD EN13561

Class 0 Wind Strength (Beaufort): 1-3 ( light air to gentle breeze) Up to 19 km/h (1-8 mph)-Leaves and thin twigs are constantly moving.

Class 1 Wind Strength (Beaufort): 4 (moderate breeze) 20-28 km/h (13-17 mph)-Twigs and thin branches bend and waste paper is raised from the ground.

Class 2 Wind Strength (Beaufort): 5 (fresh breeze) 29-38 km/h (18-24 mph) -Moderate size branches sway and small bushes are shaken.

Class 3 Wind Strength (Beaufort): 6 (strong breeze) 39-49 km/h (25-30 mph) -Thick branches sway and umbrellas are difficult to hold.

Awnings are essentially intended to protect you from the sun and should be retracted when it rains. Our awnings are constructed of materials of sufficient strength and the cover is so resistant to vagaries of the weather that they may remain extended during light rain showers without suffering any damage provided that their pitch is sufficient to allow water to runoff of the awning and thereby preventing pooling of water between the arms. A minimum pitch of at least 20 degrees must be maintained and the cover has to be taut (this can be achieved by retracting the awning 2-3" after extending the awning to its full projection thus increasing the tension the arms are exerting on the fabric). An awning cover that has been rolled up while wet should be extended and allowed to dry when weather conditions permit and allowed to dry prior to retracting.