



TROPICAL J's INCORPORATED

1052 Ulupono Street
Honolulu, HI 96819
Office: **808.848.0888**
Fax: **808.847.3893**
Lic# C-23241
www.TropicalJs.com

AWNINGS

Made in Hawai'i. Made for Hawai'i.

Tropical J's is Hawaii's leader in quality, custom manufactured, steel and aluminum awnings. Awnings are typically considered building decoration and they usually can't project more than 5' off a building without requiring a post. The introduction of at least one post turns a awning into a canopy, and a canopy has different zoning implications than an awning. This document focuses on commercial grade fabric awnings that carry the fire retardant properties required by our local building code.

We only manufacture custom awnings so we offer you many points of customization. This document is intended to help clarify the options that are available and to help you and your salesman fine tune your product. Our mission is to keep our Ohana covered in style, rain or shine. For quote requests please visit TropicalJs.com



CUSTOMIZATION POINTS

1. SIZE



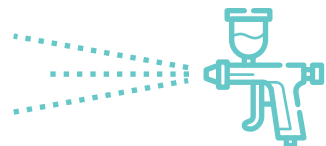
2. SHAPE



3. FRAME MATERIAL



4. PAINT COLOR



5. FABRIC/COLOR



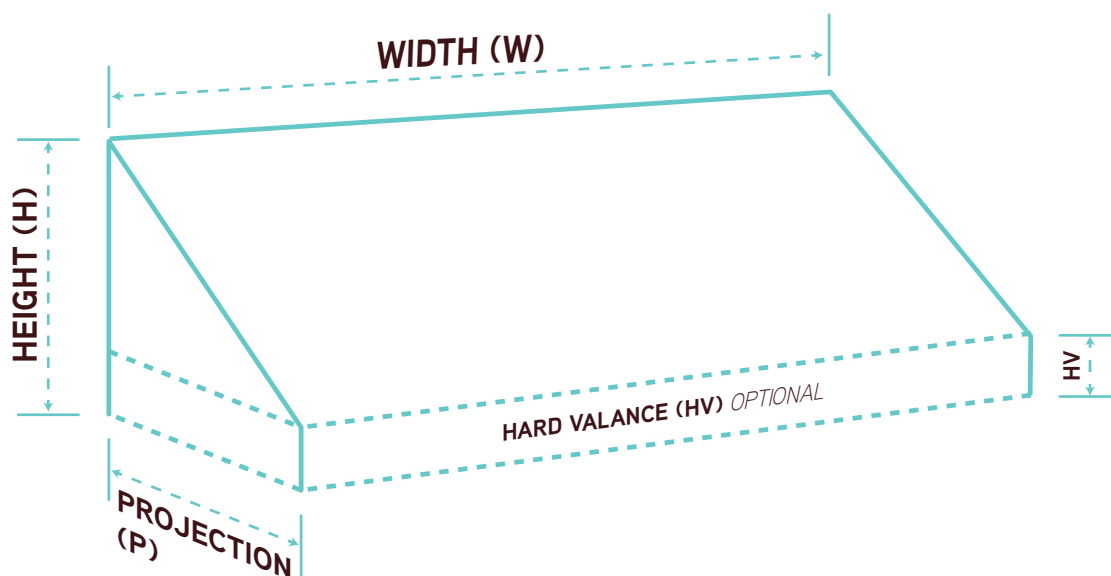
6. FABRIC ATTACHMENT





SIZING

All awnings are made to order



WIDTH This is how wide the awning is. If the awning is covering doors or windows, we usually try and give at least a few inches of additional width. We typically give at least 1" of space on either side if the awning is going into a space.

HEIGHT The total height of the awning including the hard valance. There's really no restrictions here, we've manufactured some really tall awnings in the past.

PROJECTION Awnings usually don't project more than 5' off a building. At 5' they may require a post. The introduction of a post turns an awning into a canopy which has serious permit implications. Awnings over doors should give you ample room to do what you need to do while its raining.

HARD VALANCE The hard valance adds a touch of class and provides a space for graphics. An awning does not need a hard valance.



SHAPES

Other shapes and styles are possible. Explore our project gallery online for inspiration and your salesman will help bring your vision to life.



Standard



Barrel



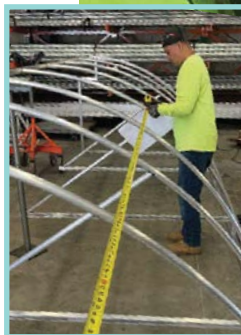
Dome





FRAME

In 10-15+ years from now, when the fabric needs to be replaced, you will be glad that you went with a reputable manufacturer. We try to use aluminum to avoid rust altogether, but there are situations when steel is required, typically for strength. In either case, our weld department primes all welds the day of welding to prevent rust and corrosion. All tubes are mitered and/or welded closed. We do not leave tubes open ended for salt and iron to get carried in by our tradewinds. We have been recovering our awnings for many years and continue to evolve our techniques and processes to provide the best protection from Hawaii's harsh environment. Our frames are manufactured to within 1/8" tolerances to lifesize prints if needed. We take great pride in our work.



Aluminum



Aluminum

Aluminum is normally a better choice for an awning frame because of its inability to rust and lighter weight for handling. It can corrode, but corrosion is usually not as destructive as rust.

Galvanized Steel



Galvanized Steel

Steel is typically used when an awning frame requires strength. In that case we always use galvanized or stainless steel. If plates or tabs are required, they are always 304 or 316 stainless plate.



PAINT

Our paint preparation process begins in our weld department, where all welds receive priming and frames undergo a light sanding before entering our paint booth. Our painter applies a high solids epoxy primer base coat followed by two-part urethane enamel topcoat. Our topcoat is available in high gloss white or high gloss black. Custom colors and matching available.

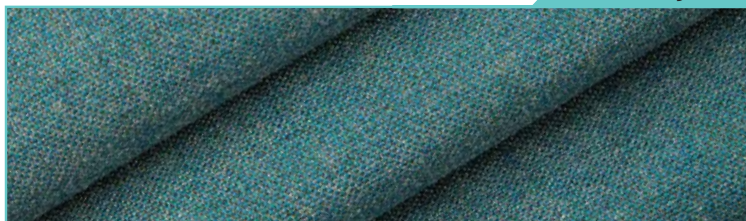




FABRICS

Commercial buildings require fire retardant fabrics. The two main categories are acrylics and vinyls.

Acrylic



Acrylic Fabric

Acrylic weaves are manufactured using solution dyed yarns. The water repellant yarns are woven together and the fabric is water repellant but not waterproof.

Pros:

- Woven yarns so it has that fabric aesthetic

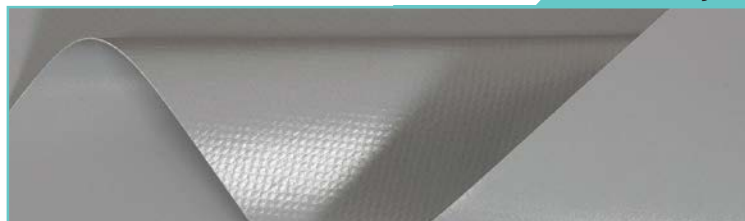
Cons:

- Typically not fire retardant
- Can accumulate dirt easier because of the weave
- Fabric welding not as reliable
- Woven so water repellant, not waterproof
- Adhesive vinyl graphics not a good option

Serge Ferrari
Premium Partner group

Soltis
Proof 502

Vinyl



Vinyl Fabric

Vinyl fabrics have an interior weave that is coated top and bottom with a PVDF coating. The coating makes them shinier than acrylics. We recommend Serge Ferrari's Soltis Proof 502, a great 10 year warranty fabric available in 40 colors.

Pros:

- Inherently fire retardant
- Possible to heat weld main panels together
- 100% Waterproof
- "Self Cleaning" because the surface is so smooth
- Adhesive vinyl graphics easily applied

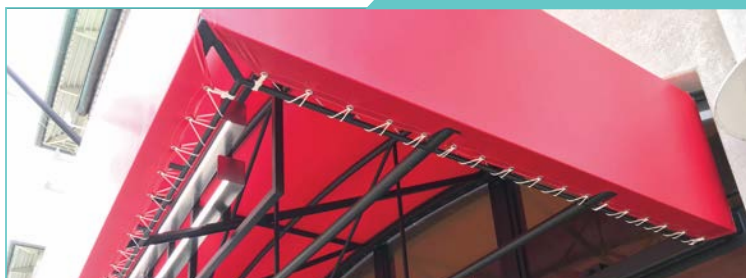
Cons:

- Satin sheen may not appeal to some customers



FABRIC ATTACHMENT

Lace



Lace

In this attachment style, the cover is manufactured with nickel plated brass grommets. The installers lace the cover to a tube welded to the awning called a lacebar. This is the appropriate connection for most fabric awnings with the intention of recovering in the future.

- Rope Material is double braided nylon
- Laceline available in black or white

Steel Stitch



Steel Stitch

In this attachment style, the fabric is stapled into a channel in the frame tubes. Once stapled in place, the extra fabric is cut off and a finishing strip is hammered into the gap to protect the stainless nails and hide the transition. This style is very clean and contemporary but may not be appropriate for larger awnings.

- Zip Strip available in 34 color options



INSTALLATION

Our operations team will strategize the best plan to execute your project quickly and safely. Your project may require working with customers while you stay open, closing the area down for the duration of the install, or requiring Tropical J's to work outside of your normal business hours, usually at overtime rates. Tropical J's is licensed and insured to operate on construction sites. We can provide all required safety documentation and certifications.

FREQUENTLY ASKED

What are your installation hours?

A typical installation window is M-F, 7:00AM ~ 3:15PM. Tropical J's may be able to operate outside this on a case by case basis at overtime rates.

Are you licensed?

Yes. Our license number is C-23241.

Are you insured?

Yes. We carry 1 Million dollar liability insurance. We can get higher policies if needed.

Can I do my own installation?

Yes but customer installation voids all warranties.

Will your work vehicles fit in my parking garage?

Not typically. Our vehicles start at 6'8" clearance

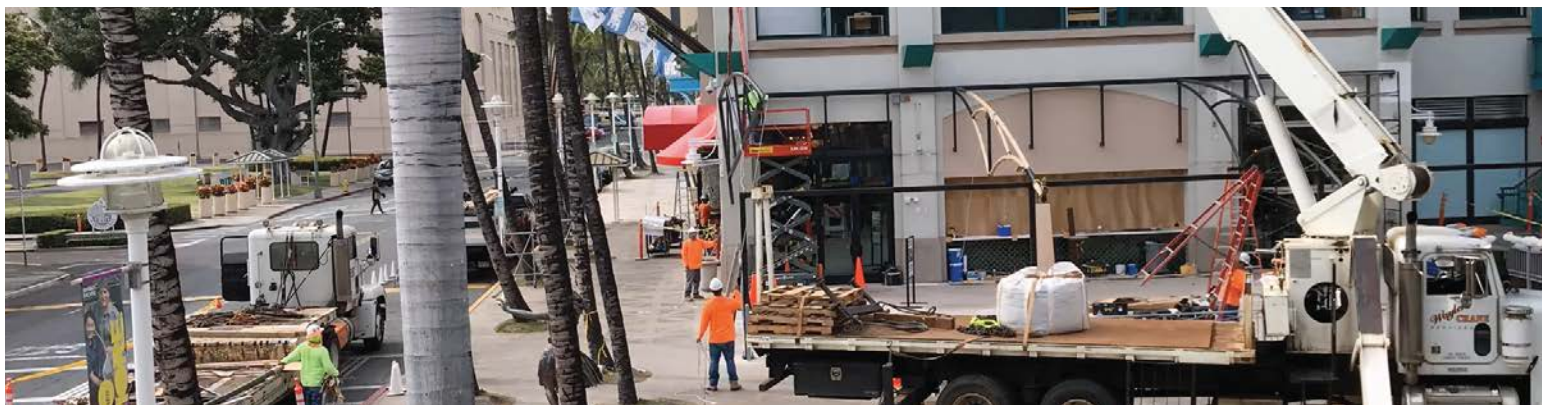
What kind of certifications do you have?

We can provide certifications for scaffold assembly, fall protection, CPR safety, powered manlifts, forklifts, all installation practices and operation of commercial vehicles. This allows us to operate on all construction sites.

Do you offer any warranties?

Installation: Tropical J's offers a 1 year warranty on all frames and installations. If something is done poorly with an awning it is almost always apparent within the first month.

Fabrics have their own warranty, usually prorated and typically 5-10 years.

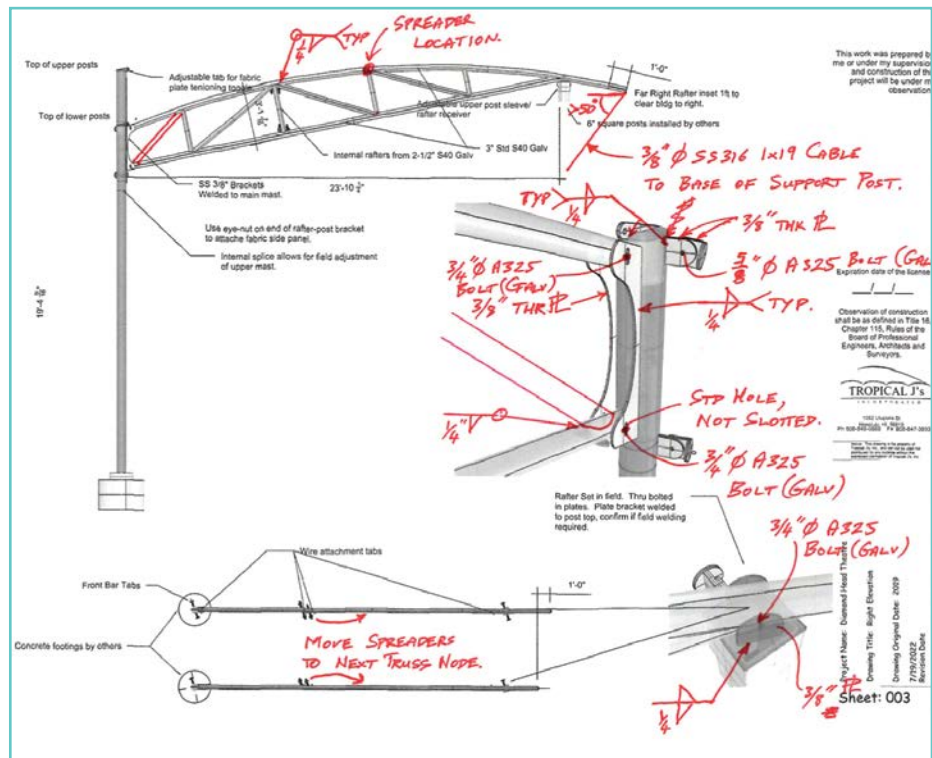


Installation of the Old Spaghetti Factory canopy at Aloha Tower Marketplace

PERMITTING

If your project requires permitting we can help. We do all our frame and fabric designs in 3D CAD and we have software that runs FEA analysis on what we design. Our structural engineer will review this data and use it in calculations to show the product meets all applicable building codes.

If permits are being pulled, the DPP will also want to know that the building can handle the additional loads generated when the product is providing stress to the building at 130 mph. An engineer will have to approve this and go on record for the building. Talk to your salesman for a better understanding of Tropical J's role in the process.



FREQUENTLY ASKED

Does Tropical J's pull permits?

Tropical J's is not an authority on permitting. We can provide the data that shows our products meet code, but we will not manage the process of pulling permits.

What is a feasibility review?

A feasibility study is an assessment of the allowability of the project. It also established within what setbacks the product(s) can be installed. A feasibility review may determine that products are **not** allowed.

Do permits require engineering?

Yes. A locally licensed structural engineer will need to stamp drawings and provide calculations showing that the product meets or exceeds code. This event can be costly which is why Tropical J's has pre-engineered some products.

Does a pre-engineered product still need engineering?

Yes. The DPP will require that the stamped drawings are of your specific location. Since we have standardized our designs, this event is not as lengthy as it used to be and we find savings here.

What if I pursue without permitting?

If the DPP discovers that your product was installed without a permit, you may be required to take it down. To reinstall it, or to be allowed to continue to have it, you will have to show proof that it meets code. This means a stamped engineering packet needs to be made. You will also have to pay a fine.

What is a design/engineering event?

In the event in which we are asked to price a project but do not have an engineering precedent for the size of the tubes, attachments, and footings, we may require a design/engineering event. In this event, we will do our best to ballpark the project based on past experience and possibly a conversation with our structural engineer. If the ballpark price sounds reasonable, we open a design/engineering contract in which we design the structure, and the engineer confirms that tube sizes are adequate. This is a necessary step in the process. By doing this before the sale, we ensure that we are not overcharging you just in case engineering requires larger tubes than we expected. This way we charge for the minimal amount of steel required to do the project.