

SUN

PROTE

CTION

reccril®
DESIGN LINE

RECASENS USA
BCN  1886

Our philosophy

Evolution and continuous improvement

We know who we are and our goals. Therefore, we stick to our principles when choosing the path by which we will achieve them:

- We are perfectionists; we want to be constantly evolving and improving day by day.
- We create and grow together with our customers.
- We develop and provide our customers with the necessary tools for them to boost their business.
- We invest in R+D+i in order to offer the innovative solutions that the market demands.
- We prioritize resources, so that we have the best machinery and technical equipment.
- We are committed to the quality and warranty of our products.
- We promote the energy efficiency, safety and sustainability of our processes and products.
- We strengthen and retain our team's talent.
- We promote training for our team, our customers and our collaborators.
- We promote the professionalization and prestige of our sector.



Our core

Experience and passion for textiles

RECASENS is a family business which was founded in Barcelona in 1886, and which continues to expand internationally, thanks to our ability to innovate, develop, manufacture and market high performance technical and decorative fabrics.

Just like Barcelona, the city that witnessed our birth and growth, we keep our tradition alive, combining it with the innovation and development that are needed for us to face new challenges. At RECASENS, our commitment to our customers is our principal motivation. We offer high quality technical fabrics and excellent service, while always promoting energy efficiency, sustainability and health.

Our experience has made us experts in sun protection, marine, upholstery and industrial fabrics, not just from a technical point of view, but also in terms of having a unique aesthetic and design vision.

We are passionate about textiles! We are fortunate to work in this industry and to collaborate with people who are passionate, dedicated perfectionists, just like us.

Our raison d'être

Teaming up with discerning customers

From the very beginning, here at RECASENS, we have been characterized by the fact that we consider the customer to be part of our team. There is nothing we like more than having discerning customers, as they help us to get the best out of ourselves.

Our mission is **to provide superior fabrics, so that our customers can manufacture and install the best end product on the market.** We are proud to collaborate with the most discerning of customers, and to work together with them as part of our team.

Our Places

Headquarters
Barcelona

Production plants

Spinning factories



Cercs
(Barcelona)



Avià
(Barcelona)

Weaving and finishing
factory



La Pobla de Montornés
(Tarragona)

Logistic Center



Yarn Warehouse



Fabrics Warehouse

Valls (Tarragona)

Offices



Madrid

Offices, showroom and
warehouse



USA

Offices in Charlotte, NC;
primary warehouse in
Hickory, NC



Asia

Offices and showroom in
Shanghai

Our fabrics



100% solution-dyed acrylic fabrics for awnings, marine and decoration.

Recacril® fabrics are designed for outdoor use, providing excellent UV protection and durability. As a result of our exclusive Infinity Process, they are water, dirt and mold repellent. They guarantee a high degree of resistance to the elements, superior comfort, and are easy to clean and maintain.



Strengths

The performance of Recacril® fabric is superior. We not only weave and finish the fabric, but we also enhance the technical properties right from the fiber, so that it offers the best performance on the market.

The Recacril® solution dyeing process

Fiber

Color pigments are applied to the polymer before the fiber is extruded. Therefore, the color is intrinsic; it is in the core of the fiber.

Yarn

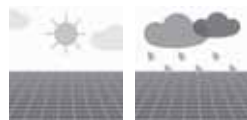
During the warping and spinning process, the fiber is transformed into Recacril® yarn that is fully dyed. Therefore, the color does not just remain on the surface, but it is consistent right from the heart of the yarn.

Fabric

As a result, RECASENS' 100% solution-dyed acrylic fabrics have exceptional color retention, as well as excellent technical properties, and UV and weather resistance.

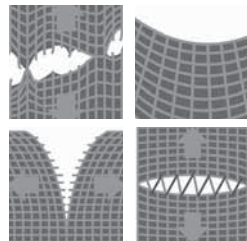


Properties



Strength of the color when exposed to light and the elements

Recacril® fabric solution dyeing process allows it to have exceptional color that is resistant to the aging and discoloration that light and the elements can cause in other types of fabrics. All the color tones of the Recacril® fabric remain vivid, without losing their brightness, even after exposure to intense sunlight.



Great mechanical resistance

Thanks to the properties and treatment of RECASENS acrylic fiber yarn, it provides great mechanical resistance, as stated in the technical data for the fabric.



Dimensional stability

It offers exceptional dimensional stability, retaining its original measurements when subjected to changes in temperature or humidity, and avoiding deformations due to the action of water or wind.



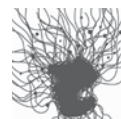
Repelling water and oil

Recacril® fabrics are treated with the exclusive Infinity Process; a special finish that completely protects the surface of the fabric, allowing it to repel water and dirt and, therefore, generating an anti-stain and anti-mold barrier.



Resistance to mold, bacteria and fungi

The Infinity Process treatment reduces the growth and proliferation of bacteria by up to 99.99% and fungi by 100%.

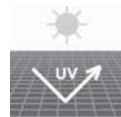


Water vapor permeability

They are closed, breathable fabrics which achieve very high water vapor permeability values.



Benefits



Superior protection from UV rays

Its special construction, together with the quality of its fibers, allows it to block up to 90% of the sun's harmful rays, reducing heat and glare. Our fabrics rigorously comply with UV Standard 801, an analysis method that determines the Ultraviolet Protection Factor.



High resistance over time

The technical properties of Recacril® fabrics allow the useful life of products that use these fabrics to be extended. In this way, we reduce the need to replace them, which translates into less consumption and waste. Reduce, recycle and reuse; the basis of any eco-friendly product.



Thermal comfort and energy saving

The entire range of Recacril® sun protection fabrics is designed to achieve thermal comfort and maximum energy efficiency in any given space. Therefore, the consumption of air conditioning and heating is reduced, saving energy and money.



Easy cleaning and maintenance

Recacril® fabrics are very easy to maintain, thanks to their anti-stain treatment, which prevents stains from penetrating the fabric. Most of the dirt can be removed with the help of a soft brush. In addition, bleach can be used without affecting the color.



Suitable for swimming pools and marine environments

This fabric can withstand saline or chlorinated environments without cracking, blistering or accelerating its wear.

Safety, Health and Environment



Applications



Patio enclosures



Drop curtain
awning



Umbrellas



Pergolas



Dutch canopy



Stationary
awnings



Drop arm
awnings



Terrace awnings



Awnings



Balcony awning



Roll up curtain



Recreational
vehicles



Separation
panel



Exterior velum



Velum



Care and cleaning of Recacril® fabrics

The high-tech finish, Infinity Process, provides Recacril® fabrics with long-lasting protection against mold and mildew, and imparts excellent water and oil repellency, helping Recacril® fabrics protect you from both sun and water for many years.

However, the accumulation of dust, air pollution particles, organic materials, fatty substances and dirt in general can damage this protection, shortening the life of Recacril® fabrics, which makes their removal necessary.

The most effective method to keep Recacril® fabrics in good condition is to clean the fabric once a month with a hose with little pressure, thus preventing the accumulation and penetration of dirt on the canvas.

It is very important that after cleaning with water, the canvas is allowed to dry completely before closing the awning.

In times of heavy rain, we recommend closing a retractable awning. If the awning is closed when wet, it should be opened as soon as possible and allowed to dry completely.

If this washing is carried out periodically with water, in most environments, it will only be necessary to do a more in depth cleaning process every 2 or 3 years.

Normal cleaning:

1. Brush the dirt with a very soft brush. NEVER brush with stiff bristle brushes since they damage the protective treatment of the fabric.
2. Spray the awning fabric with clean water.
If a hose is used, avoid using high pressure.
3. Prepare a solution of neutral soap in warm water (no more than 40° C) and apply it on the fabric.
4. Rub with a soft brush allowing the solution to penetrate the fabric.
5. Rinse with plenty of clean water to remove all soap residue.

6. Let dry in the open air and do not roll up the awning until the fabric is completely dry.

If the stains persist, it will be necessary to perform a more intense cleaning following the following using:

Intensive cleaning:

1. Brush the dirt with a very soft brush. NEVER brush with hard brushes since they damage the fabric finish.
2. Prepare a solution with 10% household bleach, 20% neutral soap (solvent free) and 70% water.
3. Apply the solution on the fabric, allowing it to act for a maximum of 15-20 minutes.
4. Rinse with plenty of clean water to remove all soapy residue, since bleach residue combined with the action of the sun could damage the fabric.
5. Let dry in the open air and do not roll up the awning until the fabric is completely dry.
6. Repeat the above process if necessary.

To protect the environment, be sure to collect dirty water when using bleach, as it can be harmful to people, animals and plants.



Recacril® Warranty

RECASENS guarantees the Recacril® canvas for a period of 10 years from the date of installation.

The guarantee covers the abnormal deterioration, decay and loss of color of Recacril® subjected to normal atmospheric conditions and when correct maintenance has been systematically carried out.

Within the period, RECASENS will replace free of charge the defective yardage or pay its cost.

The guarantee covers only the value of the canvas and specifically excludes any other elements of the awning (hardware, mechanisms, etc.), as well as the costs of producing and installing the awning.

The warranty does not cover any deterioration due to abuse, negligence, vandalism, burns of any kind, fires and natural disasters.

In particular, the warranty does not cover:

- The lack of maintenance of the canvas during its use.
- Use of inappropriate cleaning solutions or tools. NEVER use solvents, stiff bristle brushes or other scraping instruments that can damage the fabric or its protective finish.
- Atmospheric pollution or plant herbicides.
- Animal waste.
- Improper installation of the fabric, or misuse by the customer.
- Placing objects, or items falling, on the top of the canvas.
- Unusual atmospheric conditions (lightning, storms, etc.).

In order to process the guarantee, it is necessary to contact the installer or distributor from whom you purchased the product. The installer or distributor shall forward the claim to RECASENS.

Replacement or refund of defective fabric does not imply the extension of the warranty of the replacement fabric.





Safety, Health and Sustainability

Here at RECASENS, we work intensively on the development of new products, as well as the enhancement of our classic fabrics. We aim to improve the health and comfort of people, contribute to the reduction of heat gain, and ensure environmental sustainability with technical performance fabrics.



Health

REACH Legislation

RECASENS complies with REACH legislation (Registration, Evaluation, Authorisation and restriction of Chemicals) in the fabrics it supplies.



Confidence in Textiles

Our fabrics have the Confidence in Textiles seal. Oeko-Tex Standard 100 is a system of tests and verification for textile products, across all stages of manufacturing.



Greenguard Gold

This certificate aims to protect human health by improving indoor air quality and ensures that the product can be used in places such as schools and hospitals.



PV-3900 Odors Test

Ensures that fabrics which are suitable for indoor use do not generate unpleasant odors for the end user. Evaluates the behavior of fabrics, in terms of odors, when subjected to the effects of temperature and climate.



Ultraviolet Protection

Our range of technical fabrics for solar protection has data which can be used to determine the level of skin protection provided against harmful ultraviolet rays.

Sustainability: small actions that add up

Energy efficiency

All our products are oriented to optimize the sun as a renewable energy source, seeking to achieve the best possible energy efficiency for the end user when they install solutions that use RECASENS fabric.

We minimize the use of paper, and the paper we do use is 100% recycled

We are constantly reviewing our processes to minimize printing on paper, using digital alternatives instead. In addition, all the paper used throughout RECASENS offices and facilities is 100% recycled.

Waste treatment

The waste generated both in the process of producing the fabric, and in the team's activity itself, is separated and recycled where possible.

Purification of waste water


We clean all the water used in our factories and we offer the use of our treatment facilities to other local institutions.



Reduction of energy consumption

We substitute traditional lighting for low-consumption light bulbs and we encourage the use of natural light in our facilities.



Index

 SOLIDS

 RECSYSTEM®
 RECSYSTEM® FR

 PREMIUM COLOR

RECACRIL RANGE

SOLIDS

WIDTH

 S	R-099	WHITE	47" / 60"
 S	R-100	BEIGE	47" / 60"
 S	R-102	FOREST GREEN	47" / 60"
 S	R-103	BLACK	47" / 60"
S	R-104	CHESTNUT	47" / 60"
S	R-105	SALMON 	47"
 S	R-114	PEARL	47" / 60"
S	R-115	CREAM	47"
 S	R-117	RAW	47" / 60"
S	R-122	SEASHELL	47"
 S	R-126	LINEN	47" / 60"
 S	R-127	MOONROCK	47" / 60"
S	R-133	CINNAMON	47"
 S	R-138	CADET GREY	47" / 60"
S	R-139	HEATHER BEIGE	47" / 60"
S	R-142	EMERALD	47" / 60"
S	R-143	HEMP BEIGE	47" / 60"
 S	R-150	DARK GREY	47"
 S	R-156	BROWN	47" / 60"
S	R-160	PISTACHIO	47" / 60"
 S	R-161	GREY	47" / 60"
S	R-163	GREEN	47" / 60"
 S	R-164	CHARCOAL GREY	47" / 60"
S	R-169	STEEL BLUE	47" / 60"
 S	R-170	ADMIRAL BLUE	47" / 60"
S	R-171	TURQUOISE	47" / 60"
 S	R-172	BLUE	47" / 60"
 S	R-173	DARK BLUE	47" / 60"
 S	R-174	NAVY BLUE	47" / 60"

WIDTH

 S	R-175	CAPTAIN NAVY	47" / 60"
 S	R-176	RED 	47" / 60"
 S	R-177	BURGUNDY 	47" / 60"
S	R-178	TOAST	47" / 60"
S	R-180	SAND	47"
S	R-181	COFFEE 	47"
S	R-182	VERMILLION 	47" / 60"
S	R-185	PUMPKIN	47" / 60"
S	R-186	SILVER	47"
S	R-187	JADE	47"
S	R-193	LIGHT BLUE	47"
S	R-194	ASH	47" / 60"
S	R-195	CACAO	47"
S	R-196	TITANIUM	47" / 60"
S	R-197	LEAD TWEED	47"
S	R-198	NICKEL	47" / 60"
S	R-220	ARGENT	47"
S	R-229	SAPPHIRE	47"
S	R-232	DENIM	47"
S	R-241	PHOENIX 	47"
S	R-243	TAPENADE	47"
S	R-244	DUN	47"
S	R-248	HUNTER	47"
S	R-292	TEAL	47" / 60"
S	R-293	ARGENT TWEED	47"
S	R-294	ICE TWEED	47"
S	R-295	HONEY TWEED	47"
S	R-296	LAGOON	47"
S	R-297	BRUNETTE	47"

S	R-298	COAL	47"
S	R-300	OAT	47"
S	R-313	IGUANA TWEED	47"
S	R-314	MAPLE	47"
S	R-554	YELLOW 	47" / 60"
S	R-567	ORANGE 	47" / 60"
S	R-769	BALTIC TWEED	47" / 60"
S	R-770	CHARCOAL TWEED	47" / 60"
S	R-774	SMOKE TWEED	47"
S	R-775	LINEN TWEED	47" / 60"
S	R-776	TAUPE TWEED	47"
S	R-792	TAUPE SLUB TWEED	47"
S	R-793	LINEN SLUB TWEED	47"
S	R-794	SAND SLUB TWEED	47"
S	R-911	BALTIC	47" / 60"

Only 60"

S	R-123	ARGENTA GREY	
S	R-771	GREEN TWEED	
S	R-772	BLUE TWEED	
S	R-773	RED TWEED 	



RECASENS

BCN  1886

R-794

SAND SLUB TWEED

R-794

R-793

LINEN SLUB TWEED

R-793

R-792

TAUPE SLUB TWEED

R-792

R-293

ARGENT TWEED

R-293

R-295

HONEY TWEED

R-295

R-775

LINEN TWEED

R-775

R-773

RED TWEED

R-773

R-294

ICE TWEED

R-294

R-769

BALTIC TWEED

R-769

R-772

BLUE TWEED

R-772

R-313

IGUANA TWEED

R-313

R-771

GREEN TWEED

R-771

R-197

LEAD TWEED

R-197

R-776

TAUPE TWEED

R-776

R-774

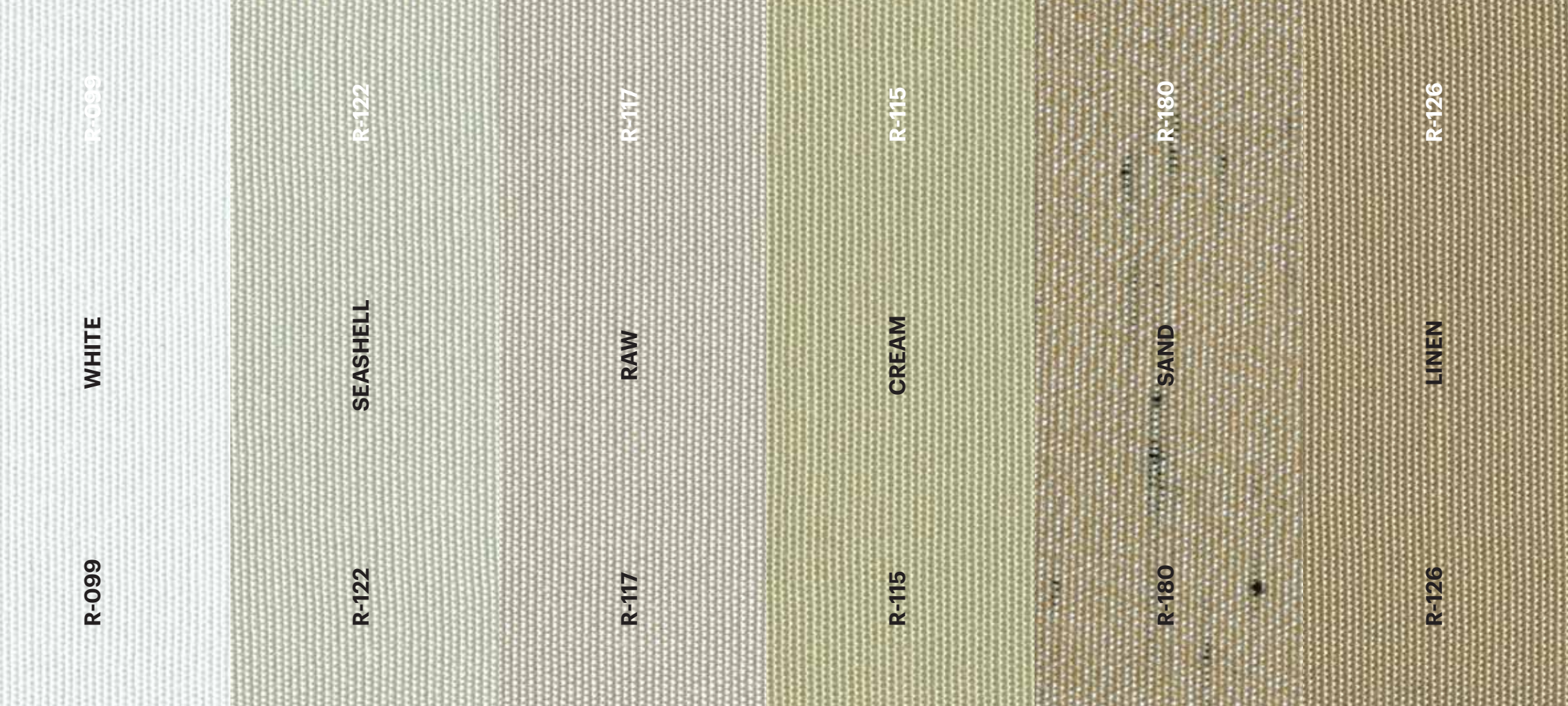
SMOKE TWEED

R-774

R-770

CHARCOAL TWEED

R-770



R-099

WHITE

R-099

R-122

SEASHELL

R-122

R-117

RAW

R-117

R-115

CREAM

R-115

R-180

SAND

R-180

R-126

LINEN

R-126

R-220

ARGENT

R-220

R-133

CINNAMON

R-133

R-300

OAT

R-300

R-314

MAPLE

R-314

R-100

BEIGE

R-100

R-178

TOAST

R-178

R-139

HEATHER BEIGE

R-139

R-143

HEMP BEIGE

R-143



R-554

YELLOW

R-554

R-567

ORANGE

R-567

R-185

PUMPKIN

R-185

R-241

PHOENIX

R-241

R-105

SALMON

R-105

R-176

RED

R-176

R-182

VERMILLION

R-182

R-177

BURGUNDY

R-177

R-104

CHESTNUT

R-104

R-195

CACAO

R-195

R-243

TAPENADE

R-243

R-297

BRUNETTE

R-297

R-244

DUN

R-244

R-156

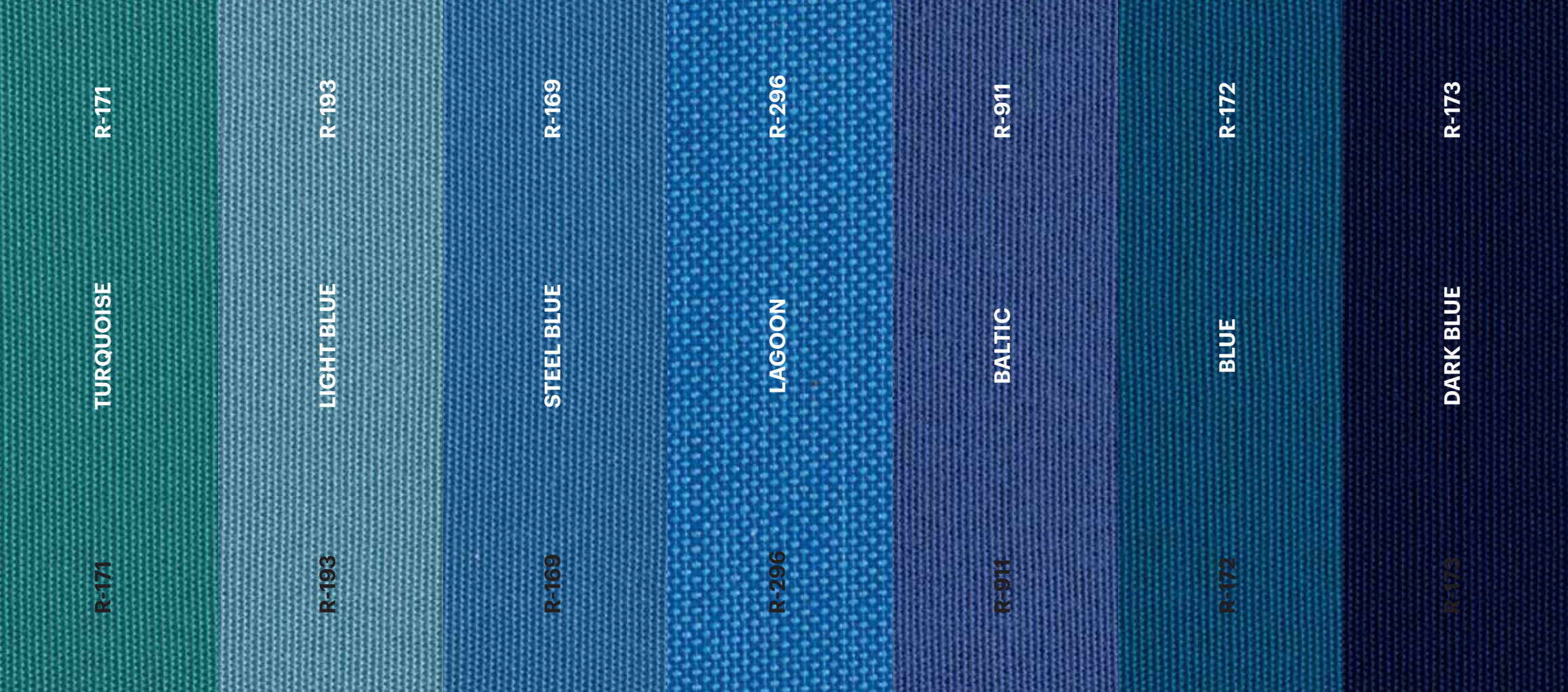
BROWN

R-156

R-181

COFFEE

R-181



R-171

TURQUOISE

R-171

R-193

LIGHT BLUE

R-193

R-169

STEEL BLUE

R-169

R-296

LAGOON

R-296

R-911

BALTIC

R-911

R-172

BLUE

R-172

R-173

DARK BLUE

R-173

R-229

SAPPHIRE

R-229

R-232

DENIM

R-232

R-170

ADMIRAL BLUE

R-170

R-174

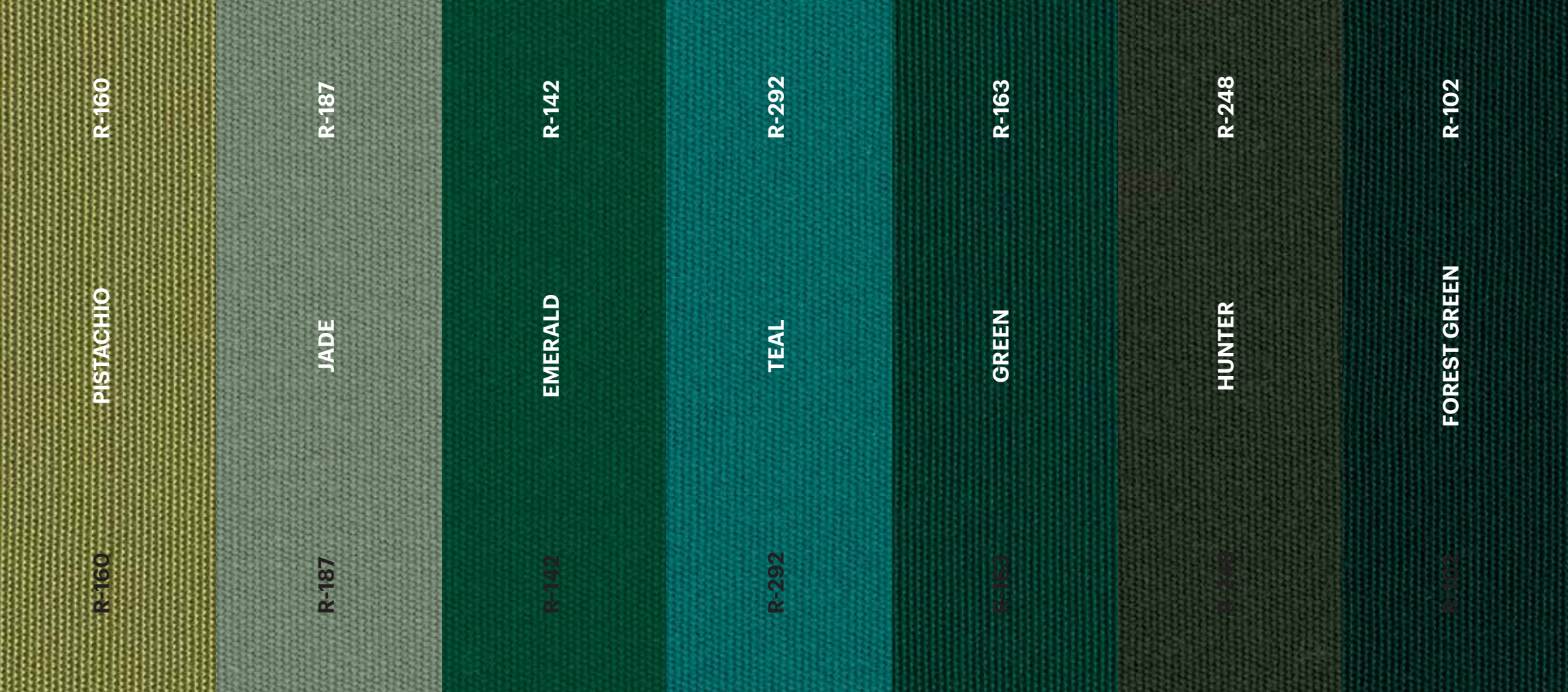
NAVY BLUE

R-174

R-175

CAPTAIN NAVY

R-175



R-160

PISTACHIO

R-160

R-187

JADE

R-187

R-142

EMERALD

R-142

R-292

TEAL

R-292

R-163

GREEN

R-163

R-248

HUNTER

R-248

R-102

FOREST GREEN

R-102

R-114

PEARL

R-114

R-186

SILVER

R-186

R-196

TITANIUM

R-196

R-123

ARGENTA GREY

R-123

R-138

CADET GREY

R-138

R-161

GREY

R-161

R-127

MOONROCK

R-127

R-194

ASH

R-194

R-198

NICKEL

R-198

R-164

CHARCOAL GREY

R-164

R-298

COAL

R-298

R-150

DARK GREY

R-150

R-103

BLACK

R-103

Index

© CLASSICS

FANCY

GREY
BROWN
RED

BLUE
GREEN

RECACRIL RANGE

CLASSICS / FANCY			Page				Page
C	R-017	WHITE BLACK	13		R-428	GANDÍA	23
	R-051	MANHATTAN	1		R-430	BARÀ	29
	R-052	BROOKLYN	35		R-434	DALIAS	30
	R-054	QUEENS	2		R-445	TONA	39
C	R-055	WHITE YELLOW	27		R-447	REUS	40
	R-060	BRONX	3		R-465	GRECIA	44
C	R-061	WHITE GREY	14		R-701	YECLA	31
	R-086	CONCORD	4		R-706	XÀTIVA	24
	R-097	TRASTÉVERE	15		R-707	ARIDANE	45
C	R-166	FOIX	42		R-747	BEGUR	12
	R-280	MIDWOOD	16		R-804	MÉRIDA	46
	R-282	PELHAM	5		R-806	ARUCAS	25
	R-321	GRACIA	6		R-808	OROTAVA	47
	R-322	BONANOVA	7		R-843	BREDA	32
	R-323	BORN	17		R-854	JUMILLA	48
	R-324	VALLS	18		R-874	LLIVIA	33
	R-325	AVIÀ	19		R-876	GALDANA	26
	R-326	CERCS	8		R-960	ALMENARA	49
	R-327	MÓSTOLES	36		R-969	VALDESPINA	41
	R-328	SANTS	9		R-971	TRUJILLO	34
	R-348	ULLA	10				
	R-349	CABRIEL	11				
	R-350	SELLA	20				
	R-352	SEGRE	21				
	R-353	MUGA	22				
	R-355	DARÓ	37				
	R-356	RUPIT	38				
	R-365	FRESER	28				
	R-411	MONTORNÉS	43				



RECASENS
BCN 1886



Fancy



Rapport | *Repeat* : 19,5 cm | 7.7"
120 cm | 47"

R-051 MANHATTAN

recoril®
DESIGN LINE

RECASENS USA
BCN  1886

P. 1



Fancy



Rapport | *Repeat* : 14,7 cm | 5.8"
120 cm | 47"

R-054 QUEENS

recoril®
DESIGN LINE

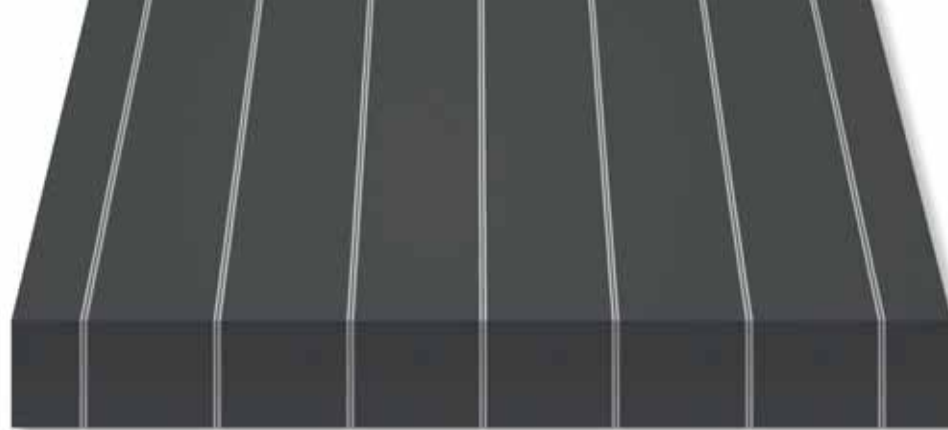
RECASENS USA
BCN  1886

P. 2





Fancy

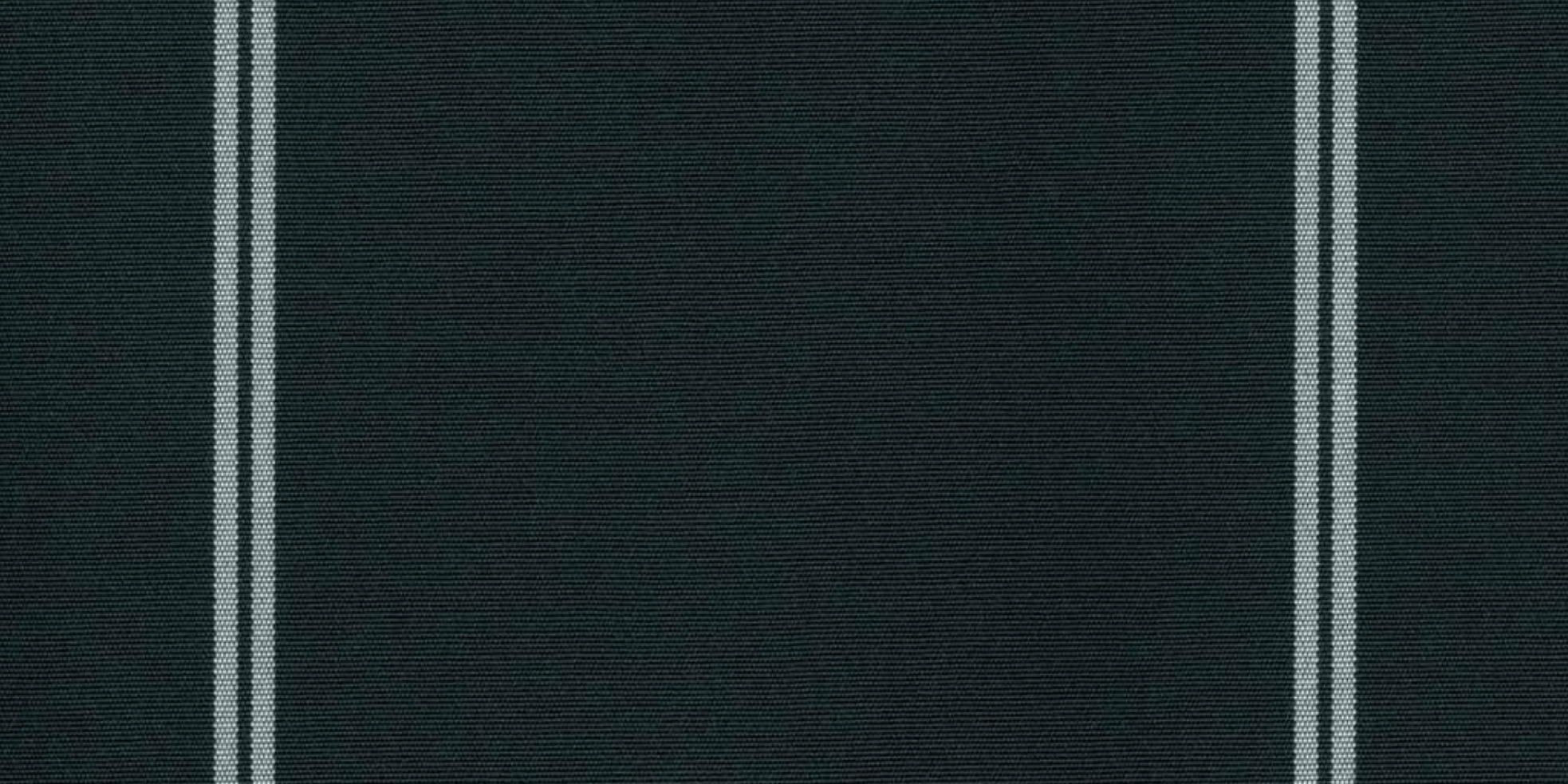


Rapport | *Repeat* : 14,8 cm | 5.9"
120 cm | 47"

R-060 BRONX

recoril®
DESIGN LINE

RECASENS USA
BCN  1886





Fancy



Rapport | *Repeat* : 23,6 cm | 9.2"
120 cm | 47"

R-086 CONCORD

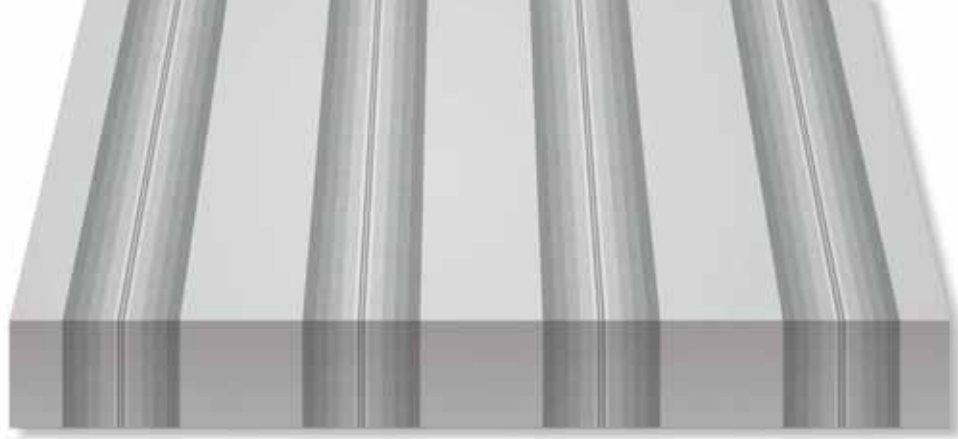
rec^ocril[®]
DESIGN LINE

RECASENS USA
BCN  1886

P. 4



Fancy

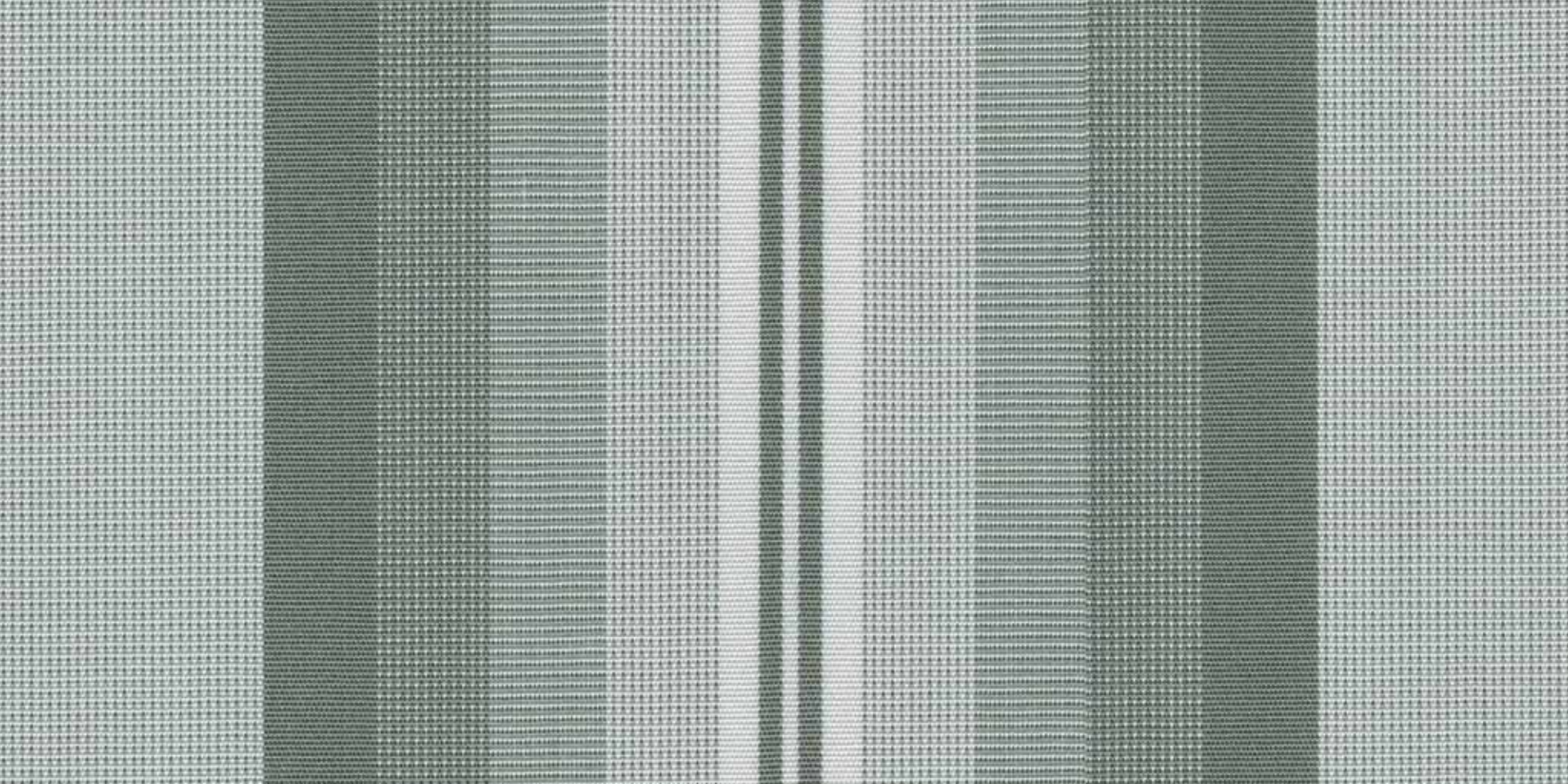


Rapport | *Repeat* : 29,6 cm | 11.6"
120 cm | 47"

R-282 PELHAM

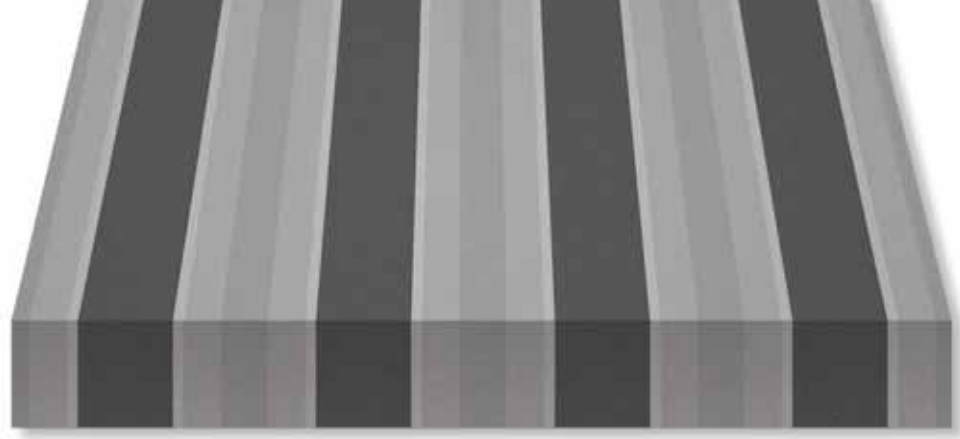
recoril®
DESIGN LINE

RECASENS USA
BCN  1886





Fancy



Rapport | *Repeat* : 30,3 cm | 11.9"
120 cm | 47"



R-321 GRACIA

recoril®
DESIGN LINE

RECASENS USA
BCN  1886

P. 6





Fancy



Rapport | *Repeat* : 30,3 cm | 11.9"
120 cm | 47"



R-322 BONANOVA

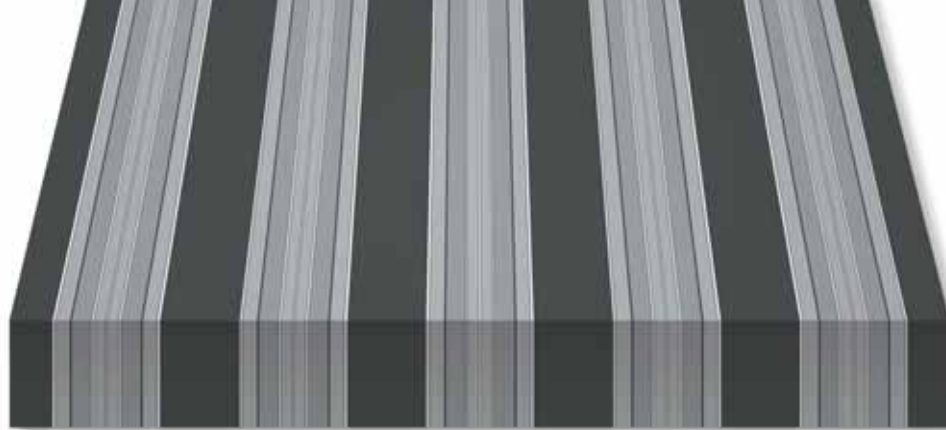
recoril®
DESIGN LINE

RECASENS USA
BCN  1886

P. 7



Fancy



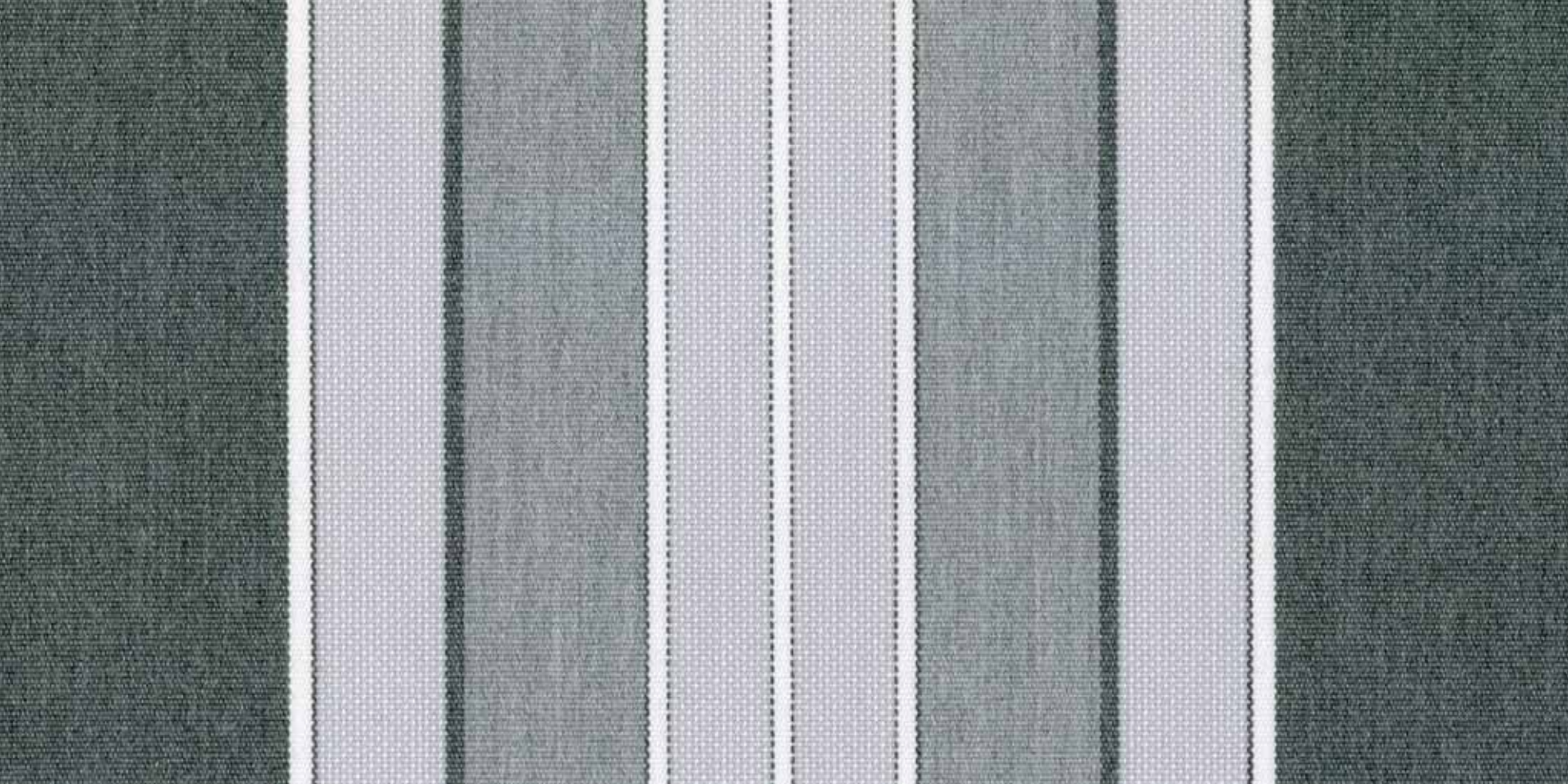
Rapport | *Repeat* : 23,5 cm | 9.2"
120 cm | 47"

NEW R-326 CERCS

recoril®
DESIGN LINE

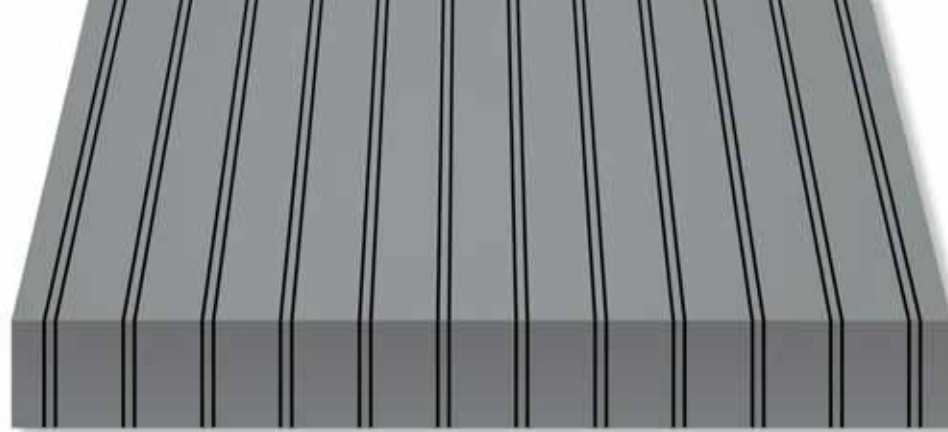
RECASENS USA
BCN  1886

P. 8





Fancy



Rapport | *Repeat* : 9,8 cm | 3.9"
120 cm | 47"



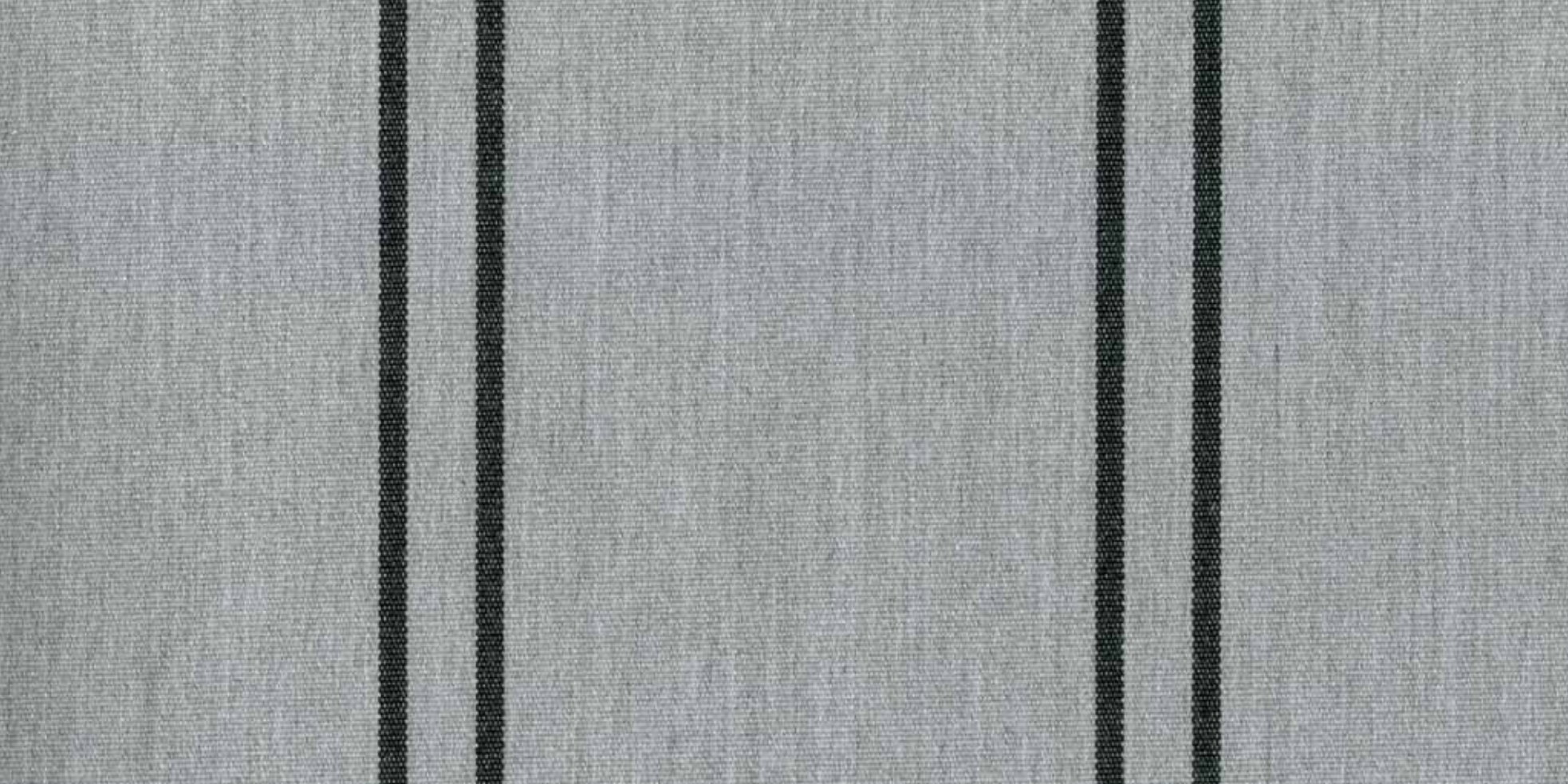
R-328 SANTS

recoril®
DESIGN LINE

RECASENS USA

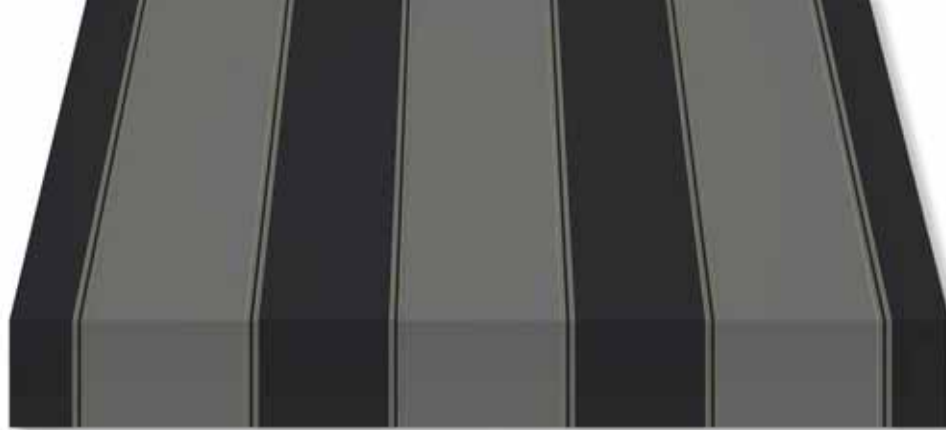
BCN  1886

P. 9





Fancy



Rapport | *Repeat* : 40 cm | 15.7"
120 cm | 47"

R-348 ULLA

recoril®
DESIGN LINE

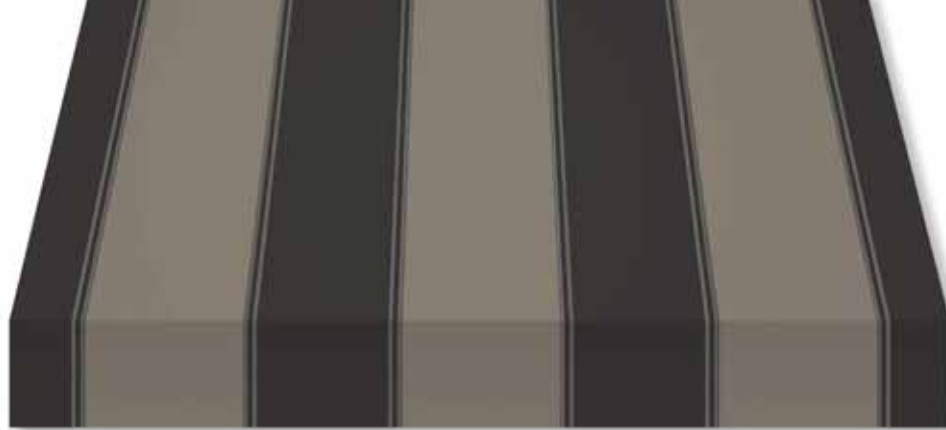
RECASENS USA
BCN  1886

P. 10





Fancy



Rapport | *Repeat* : 40 cm | 15.7"
120 cm | 47"

R-349 CABRIEL

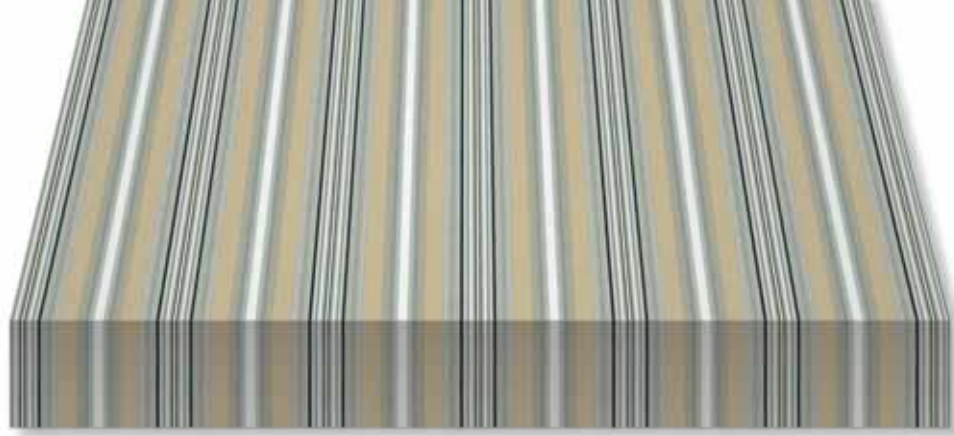
recoril®
DESIGN LINE

RECASENS USA
BCN H 1886





Fancy



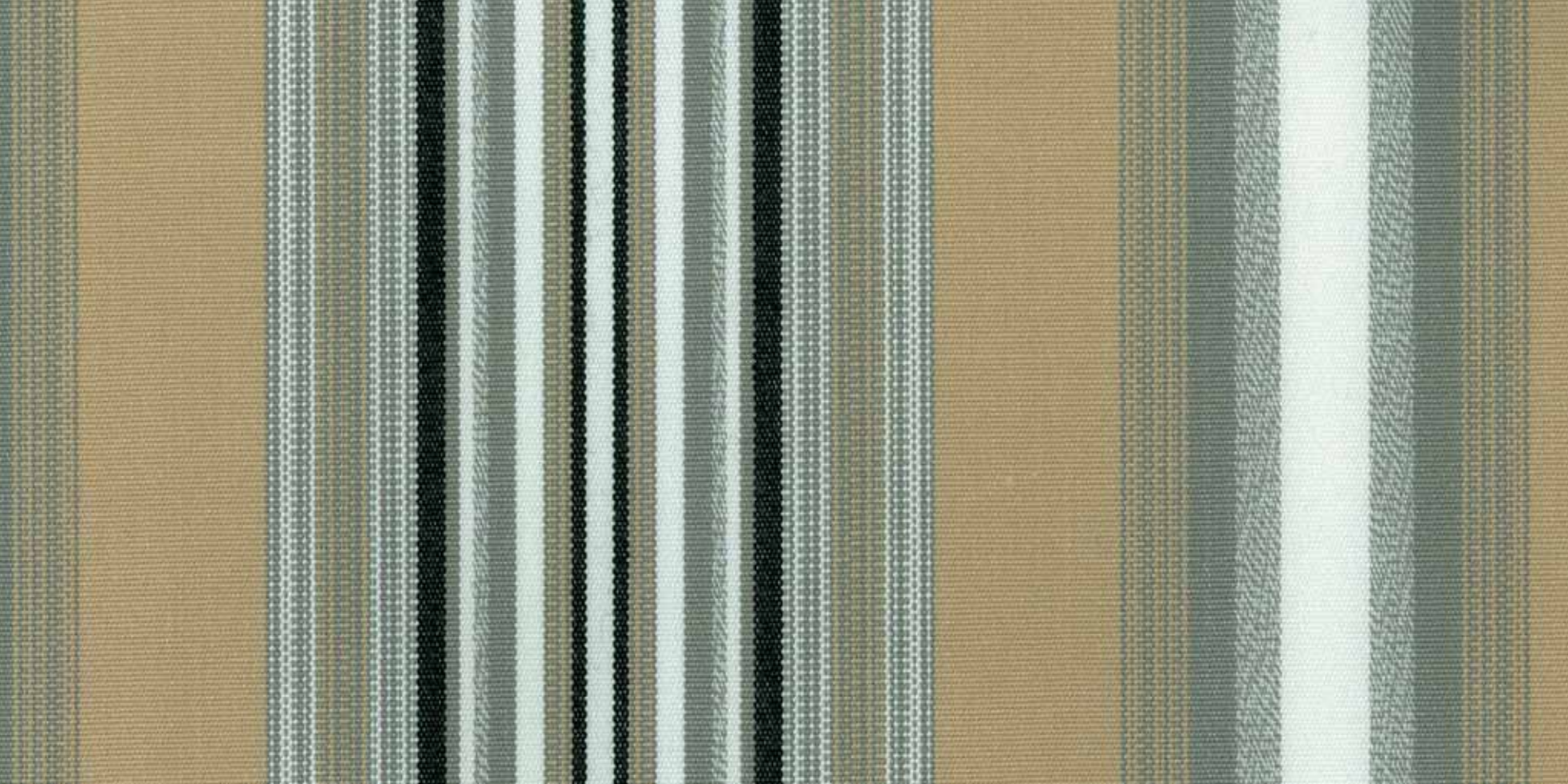
Rapport | *Repeat* : 19,5 cm | 7.7"
120 cm | 47"

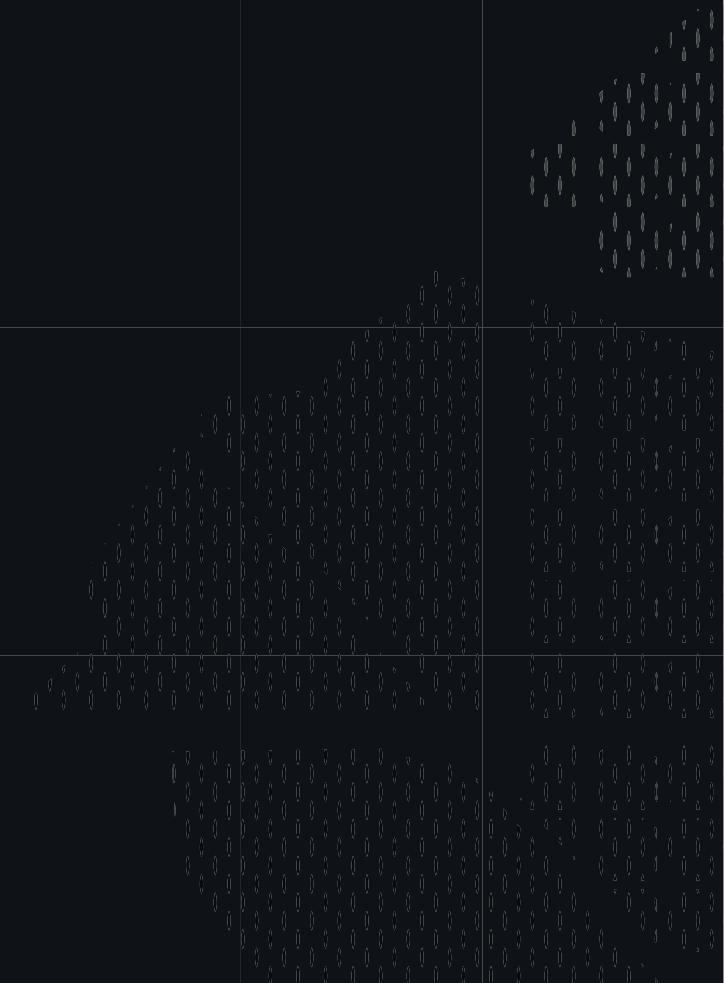
R-747 BEGUR

recoril®
DESIGN LINE

RECASENS USA
BCN  1886

P. 12





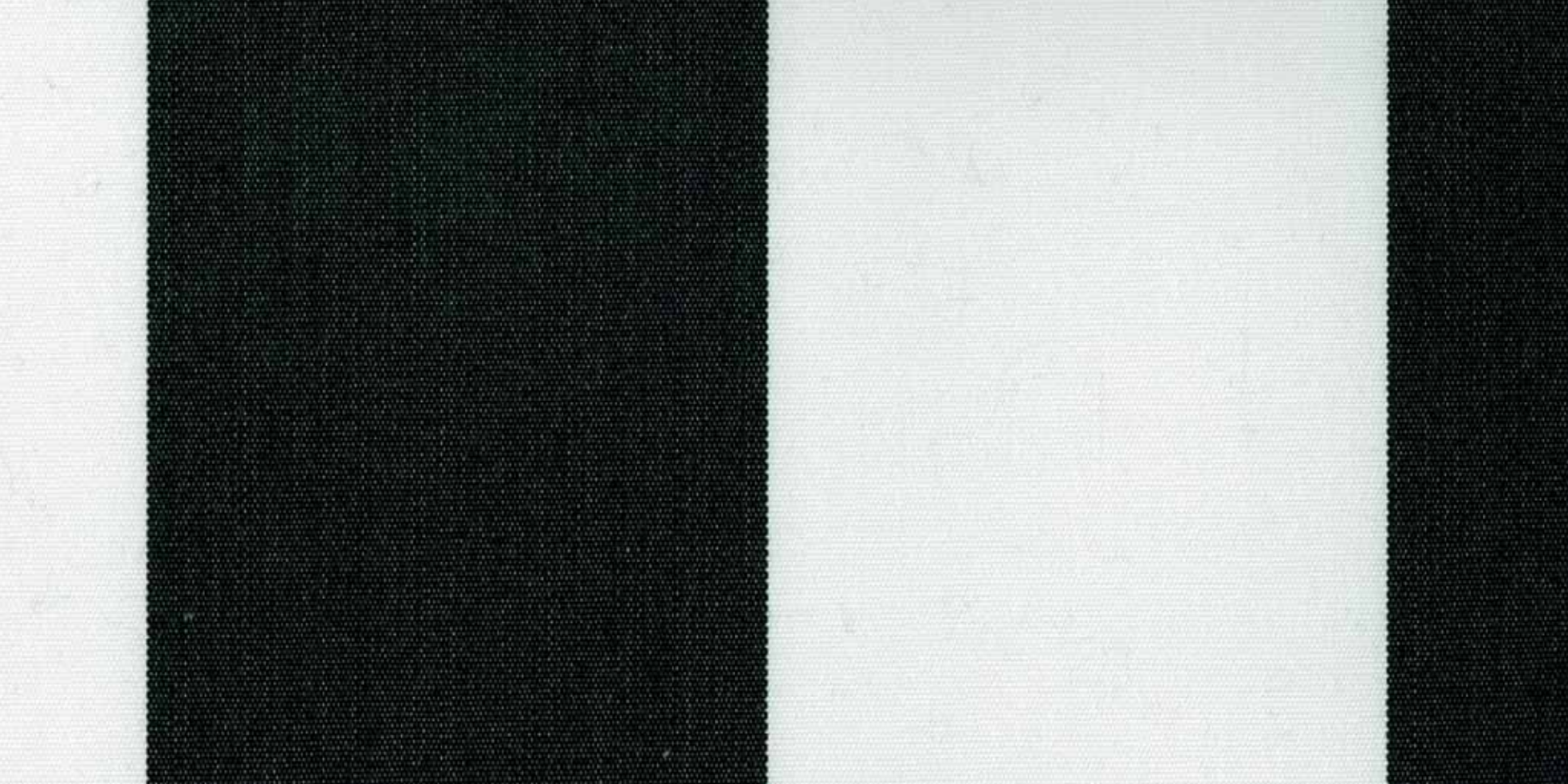
Classics

Rapport | Repeat : 16,9 cm | 6.6"
120 cm | 47"

R-017 WHITE BLACK

recoril®
DESIGN LINE

RECASENS USA
BCN H 1886



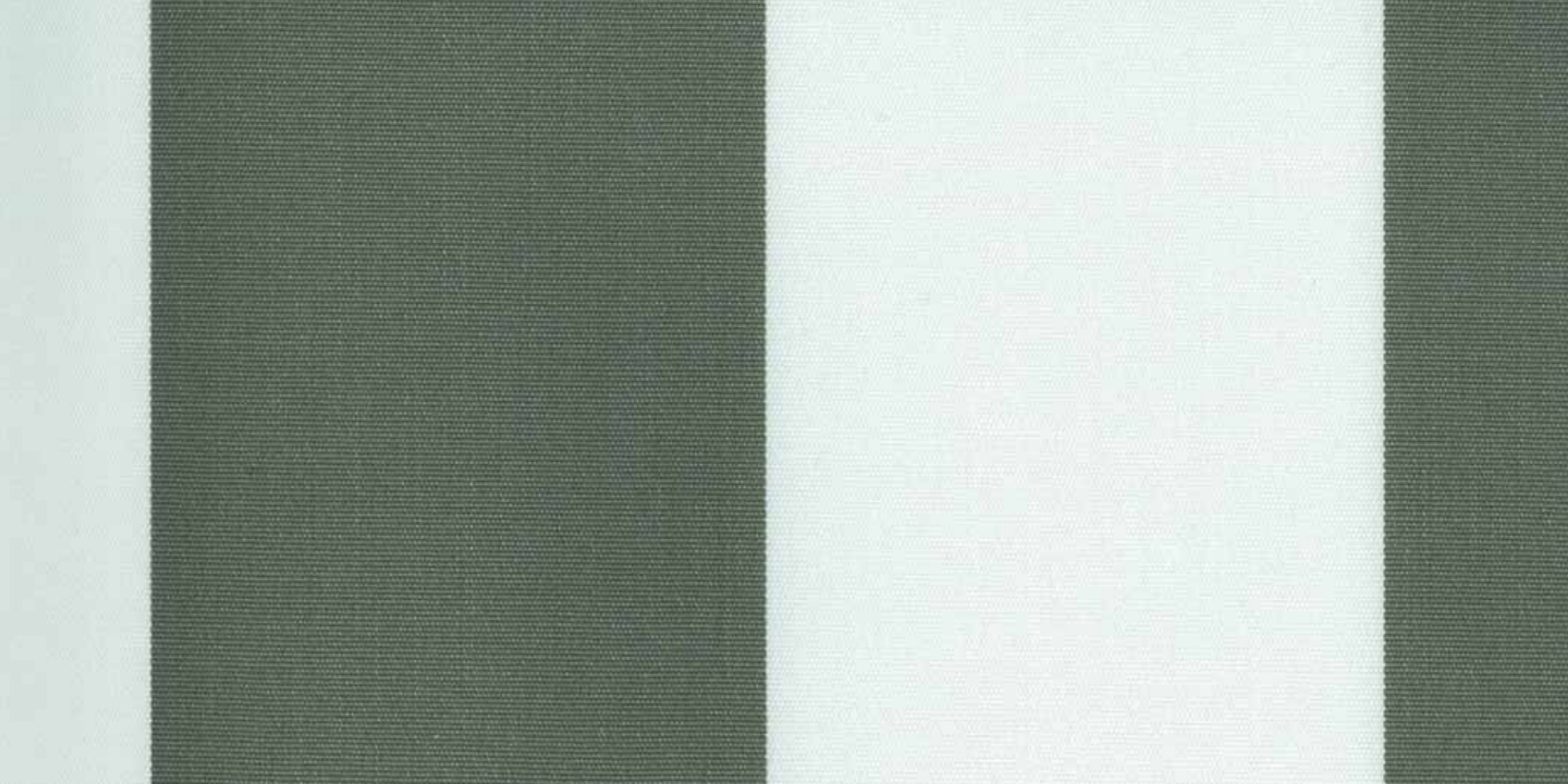


Rapport | Repeat : 16,9 cm | 6.6"
120 cm | 47"

R-061 WHITE GREY

recoril®
DESIGN LINE

RECASENS USA
BCN H 1886





Fancy



Rapport | *Repeat* : 6,2 cm | 2.4"
120 cm | 47"

R-097 TRASTÉVERE

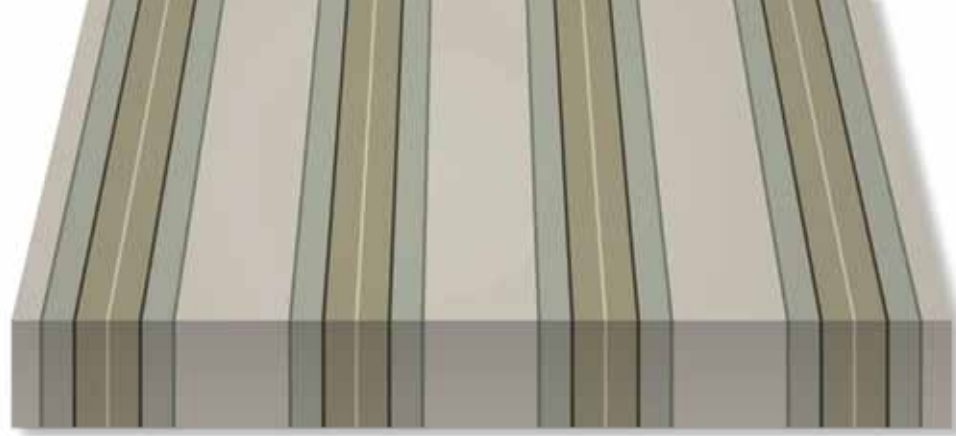
recocril®
DESIGN LINE

RECASENS USA
BCN  1886

P. 15



Fancy



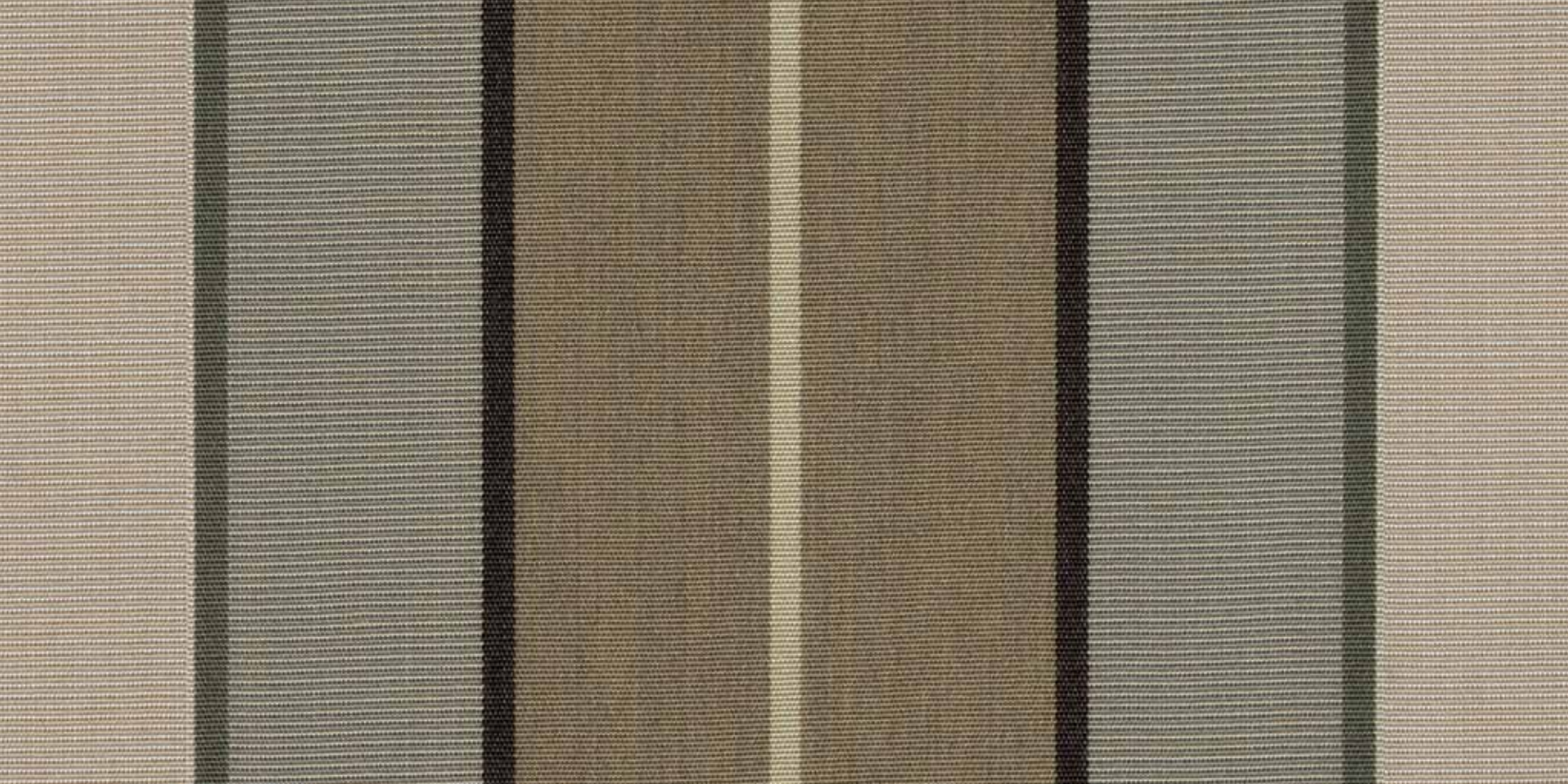
Rapport | *Repeat* : 29,8 cm | 11.7"
120 cm | 47"

R-280 MIDWOOD

recoril®
DESIGN LINE

RECASENS USA
BCN  1886

P. 16





Fancy



Rapport | *Repeat* : 30,3 cm | 11.9"
120 cm | 47"



R-323 BORN

recoril®
DESIGN LINE

RECASENS USA
BCN  1886

P. 17





Fancy



Rapport | *Repeat* : 23,5 cm | 9.2"
120 cm | 47"



R-324 VALLS

rec^ocril[®]
DESIGN LINE

RECASENS USA

BCN  1886

P. 18





Fancy



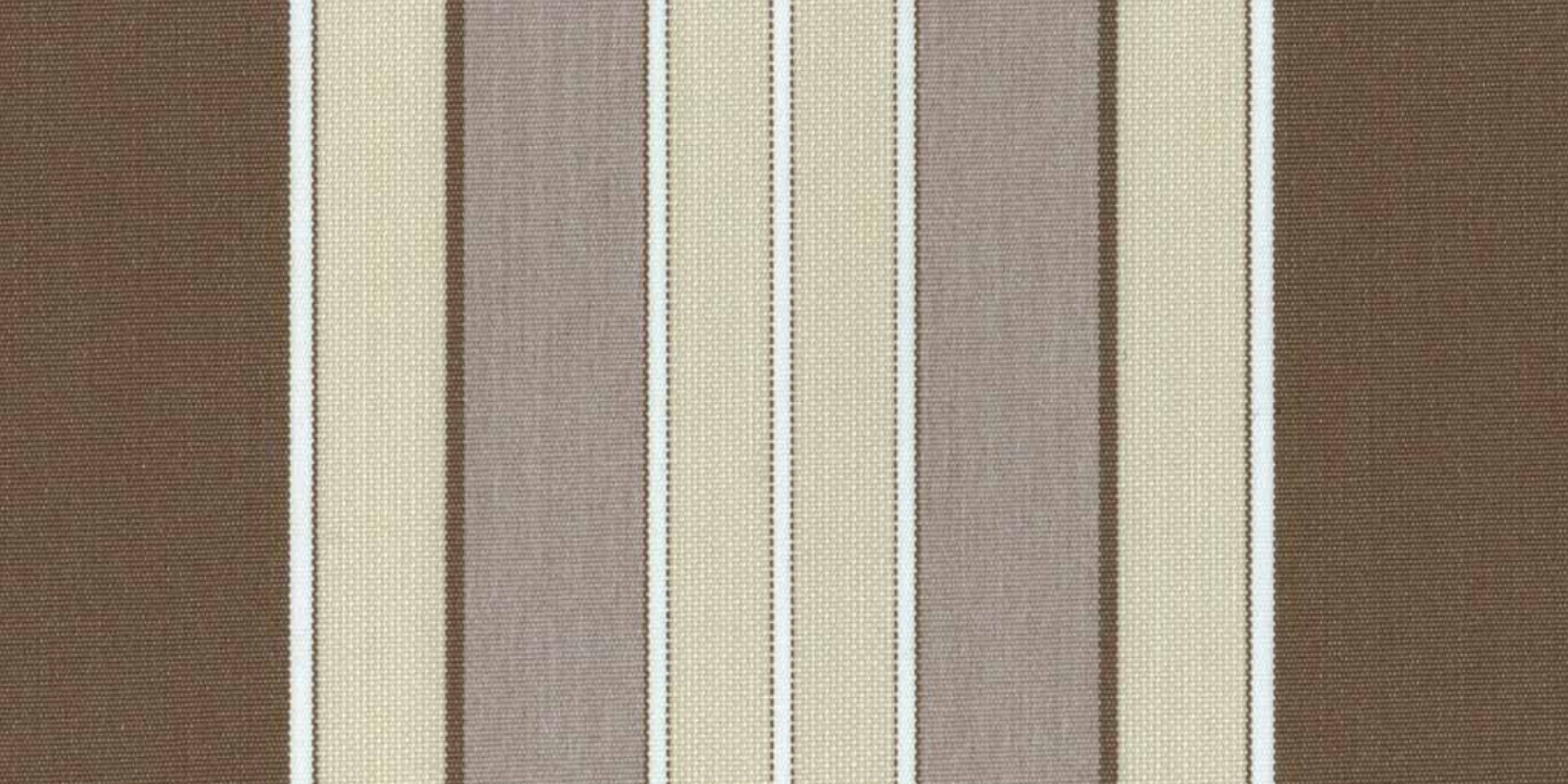
Rapport | *Repeat* : 23,5 cm | 9.2"
120 cm | 47"



R-325 AVIÁ

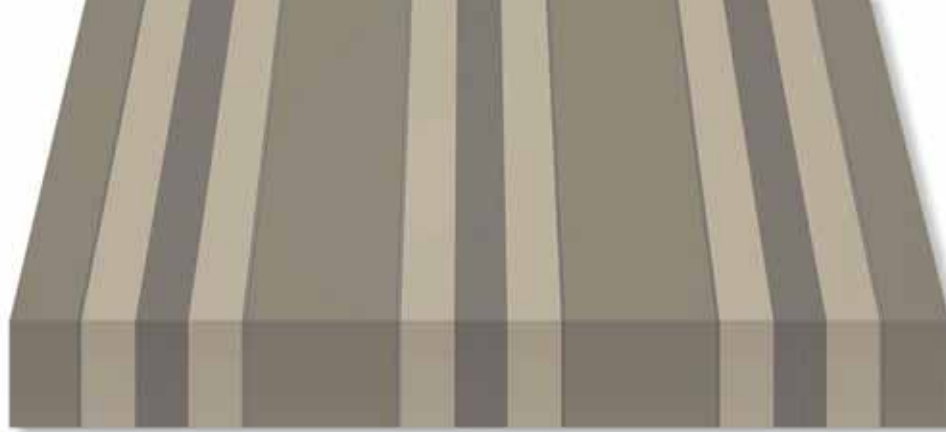
rec^ocril[®]
DESIGN LINE

RECASENS USA
BCN  1886





Fancy



Rapport | *Repeat* : 40 cm | 15.7"
120 cm | 47"

R-350 SELLA

rec  coril®
DESIGN LINE

RECASENS USA
BCN  1886

P. 20





Fancy



Rapport | *Repeat* : 40 cm | 15.7"
120 cm | 47"

R-352 SEGRE

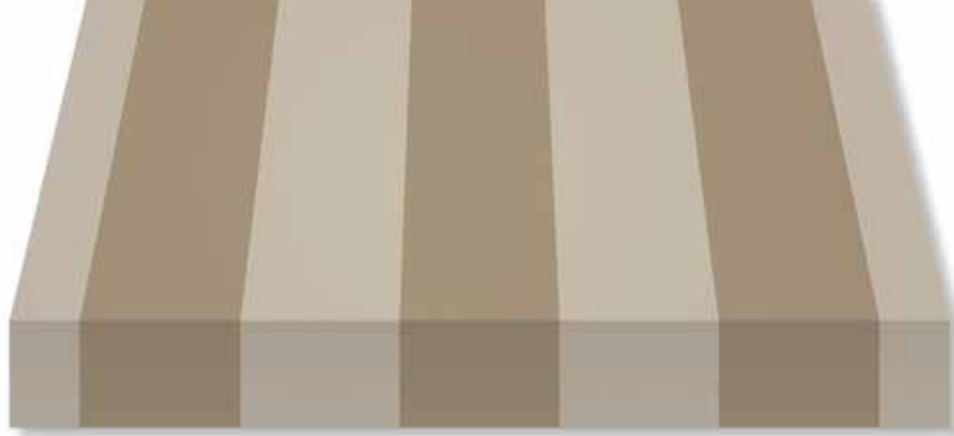
recoril®
DESIGN LINE

RECASENS USA
BCN H 1886





Fancy



Rapport | *Repeat* : 40 cm | 15.7"
120 cm | 47"

R-353 MUGA

rec^ocril[®]
DESIGN LINE

RECASENS USA
BCN  1886



Fancy



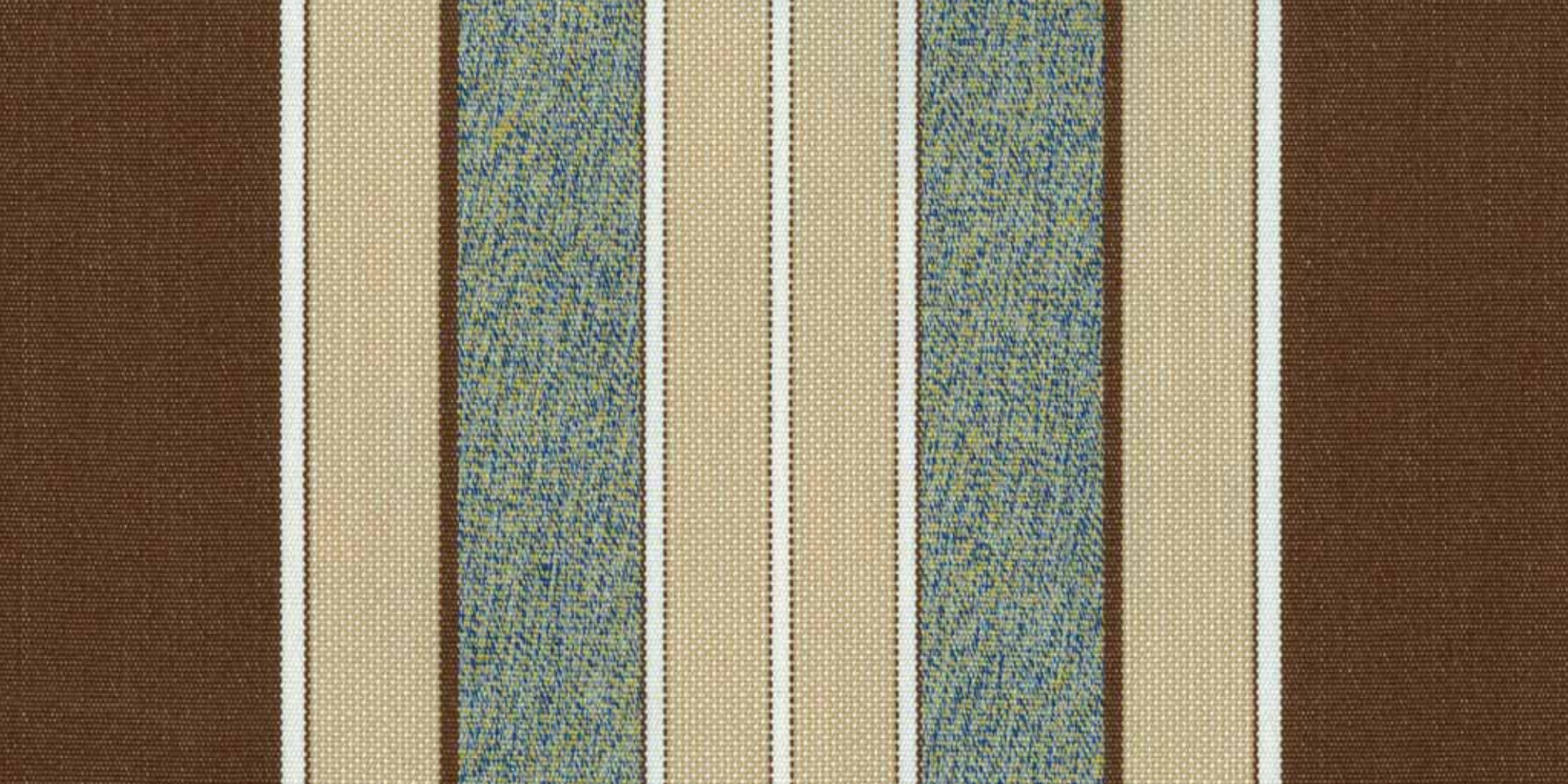
Rapport | *Repeat* : 23,5 cm | 9.2"
120 cm | 47"

R-428 GANDÍA

rec^ocril[®]
DESIGN LINE

RECASENS USA
BCN  1886

P. 23





Fancy



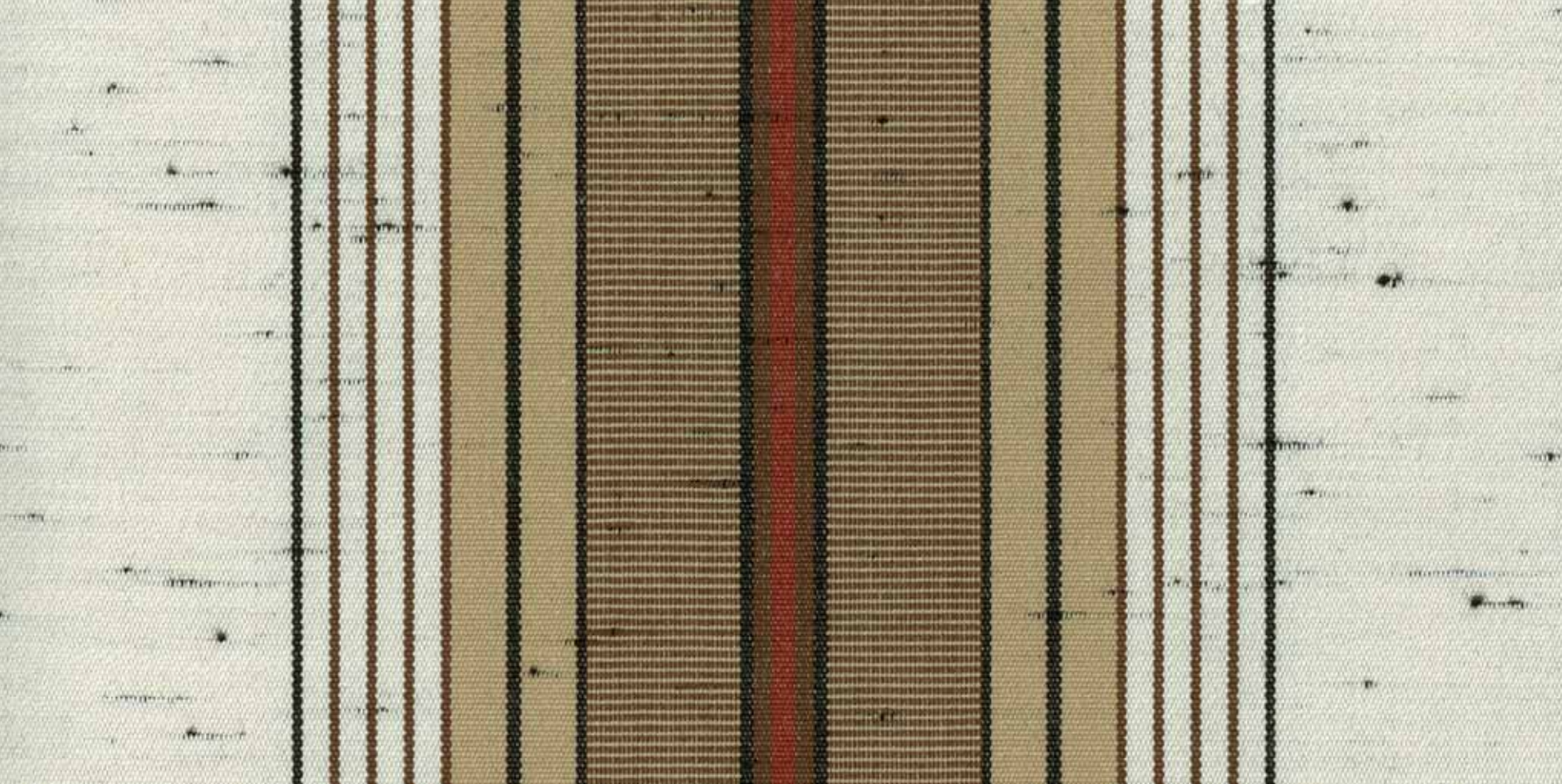
Rapport | *Repeat* : 19,5 cm | 7.7"
120 cm | 47"

R-706 XÁTIVA

rec^ocril[®]
DESIGN LINE

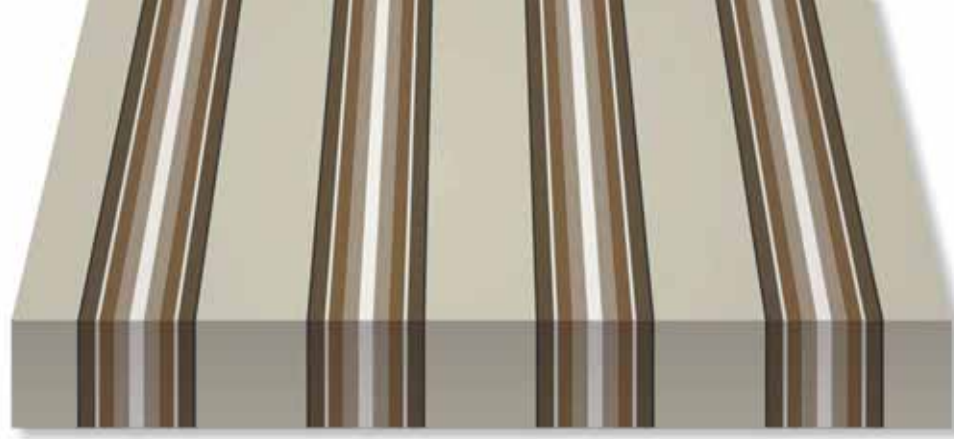
RECASENS USA
BCN  1886

P. 24





Fancy



Rapport | *Repeat* : 28,3 cm | 11.1"
120 cm | 47"

R-806 ARUCAS

rec^ocril[®]
DESIGN LINE

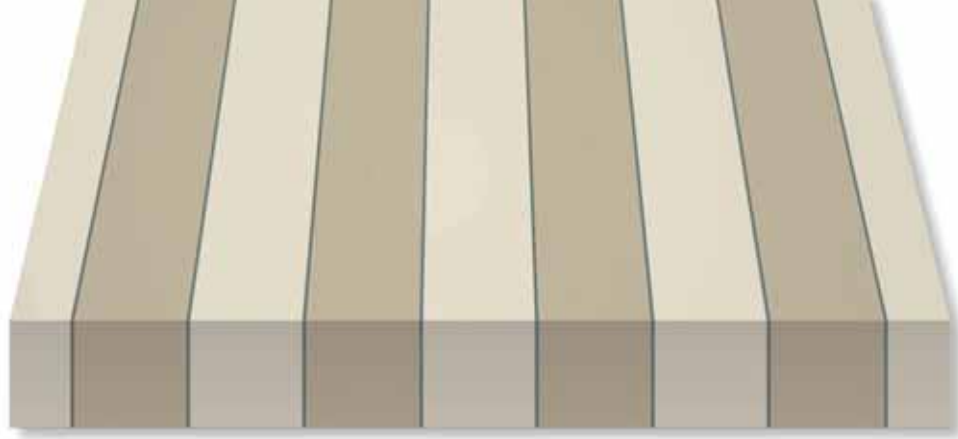
RECASENS USA
BCN  1886

P. 25

[illegible]



Fancy



Rapport | *Repeat* : 29,2 cm | 11.5"
120 cm | 47"

R-876 GALDANA

rec^ocril[®]
DESIGN LINE

RECASENS USA
BCN  1886

P. 26



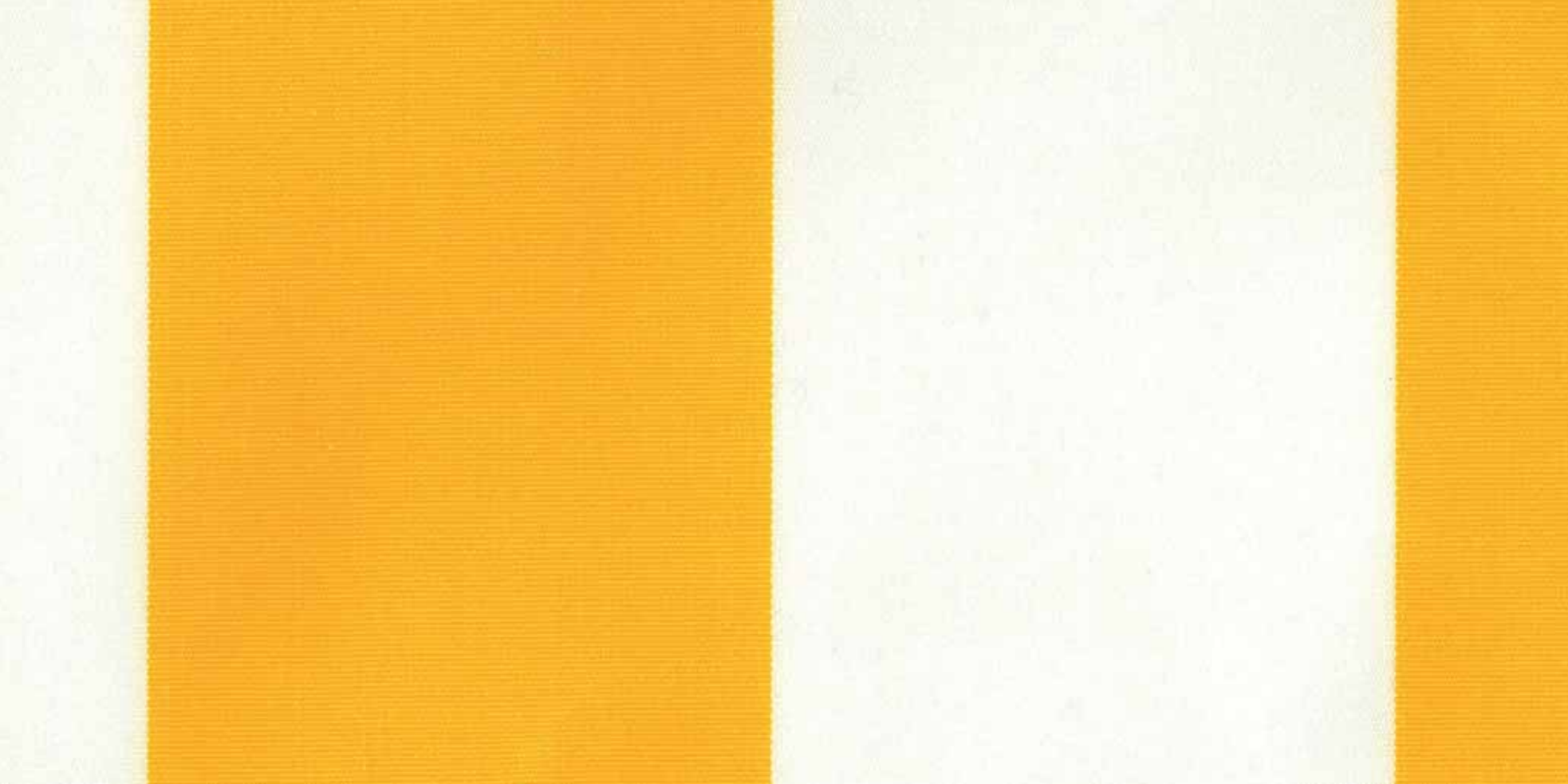


Rapport | Repeat : 16,9 cm | 6.6"
120 cm | 47"

R-055 WHITE YELLOW

recoril®
DESIGN LINE

RECASENS USA
BCN H 1886





Fancy



Rapport | *Repeat* : 40 cm | 15.7"
120 cm | 47"

R-365 FRESER

rec^ocril[®]
DESIGN LINE

RECASENS USA
BCN  1886

P. 28





Fancy



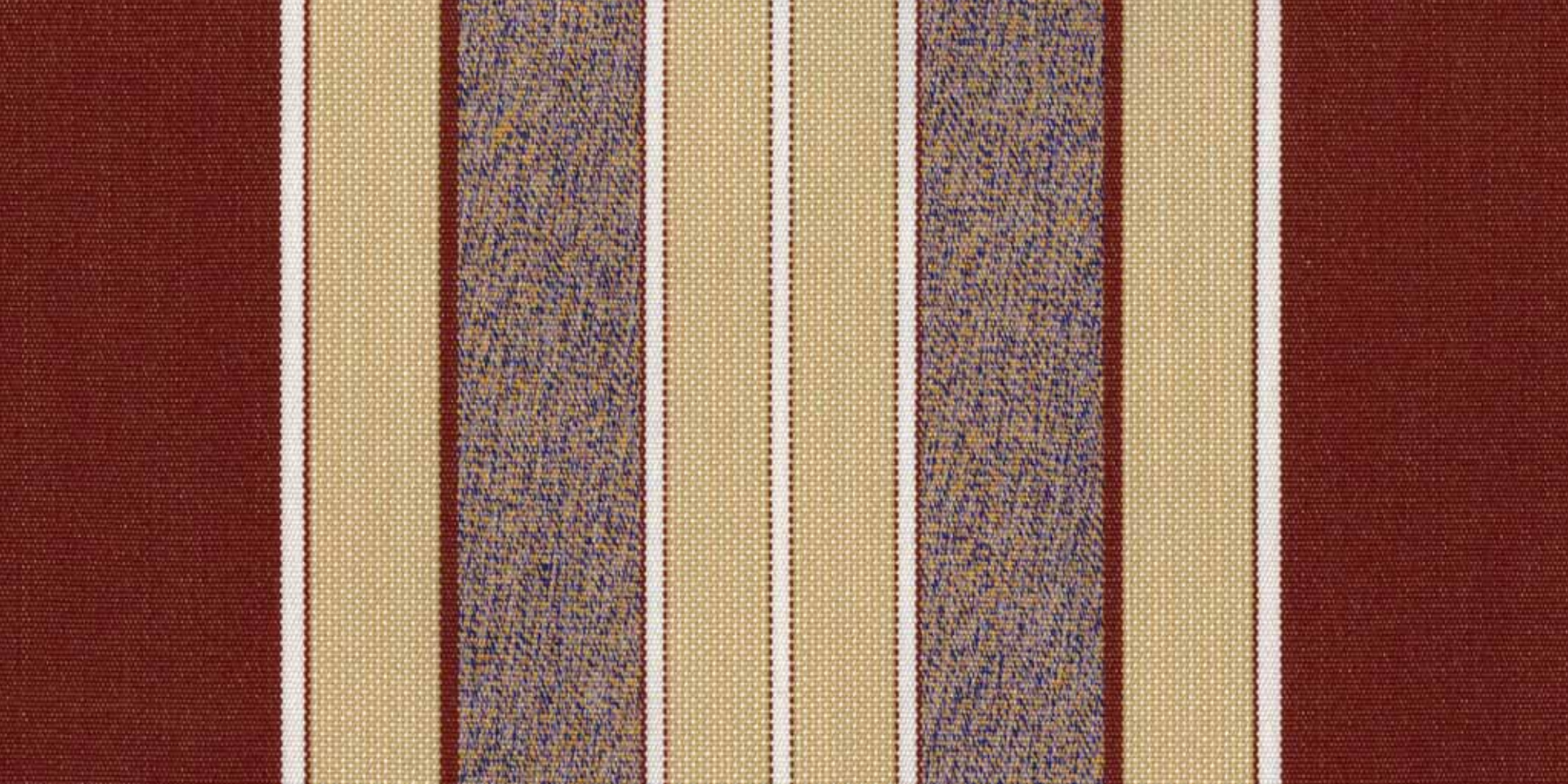
Rapport | *Repeat* : 23,5 cm | 9.2"
120 cm | 47"

R-430 BARÁ

rec^ocril[®]
DESIGN LINE

RECASENS USA
BCN  1886

P. 29





Fancy



Rapport | *Repeat* : 29 cm | 11.4"
120 cm | 47"

R-434 DALIAS

rec  ril®
DESIGN LINE

RECASENS USA
BCN  1886

P. 30





Fancy



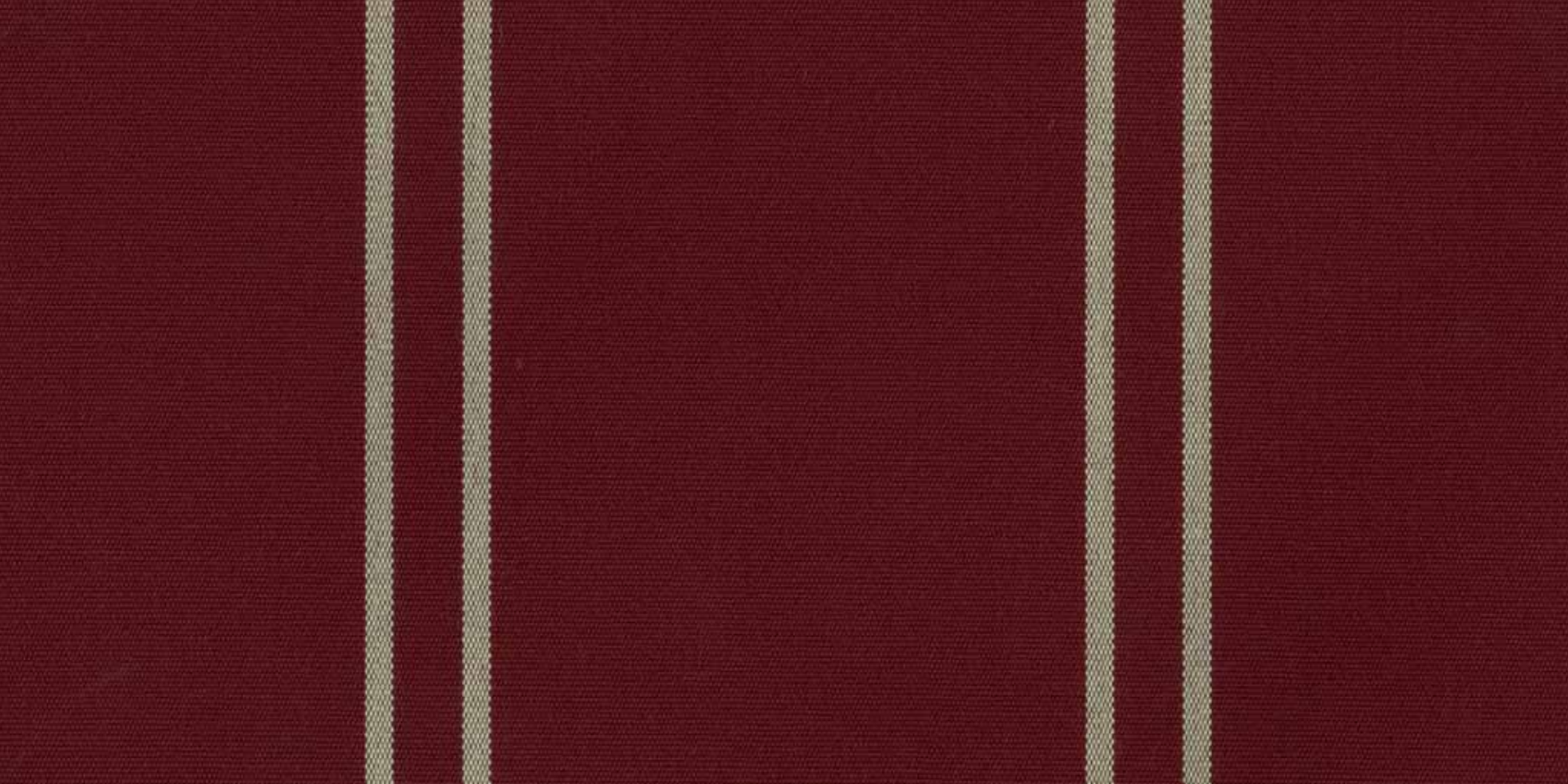
Rapport | *Repeat* : 9,8 cm | 3.9"
120 cm | 47"

R-701 YECLA

rec^ocril[®]
DESIGN LINE

RECASENS USA
BCN  1886

P. 31





Fancy



Rapport | *Repeat* : 23,4 cm | 9.2"
120 cm | 47"

R-843 Breda

rec^ocril[®]
DESIGN LINE

RECASENS USA
BCN  1886

P. 32





Fancy



Rapport | *Repeat* : 23,4 cm | 9.2"
120 cm | 47"

R-874 LLIVIA

rec^ocril[®]
DESIGN LINE

RECASENS USA
BCN  1886

P. 33





Fancy



Rapport | *Repeat* : 29,3 cm | 11.5"
120 cm | 47"

R-971 TRUJILLO

rec^ocril[®]
DESIGN LINE

RECASENS USA
BCN  1886

P. 34





Fancy



Rapport | *Repeat* : 14,7 cm | 5.8"
120 cm | 47"

R-052 BROOKLYN

recoril®
DESIGN LINE

RECASENS USA
BCN  1886

P. 35





Fancy



Rapport | *Repeat* : 23,5 cm | 9.2"
120 cm | 47"



R-327 MÓSTOLES

recoril®
DESIGN LINE

RECASENS USA
BCN  1886

P. 36





Fancy



Rapport | *Repeat* : 40 cm | 15.7"
120 cm | 47"

R-355 DARÓ

rec^ocril[®]
DESIGN LINE

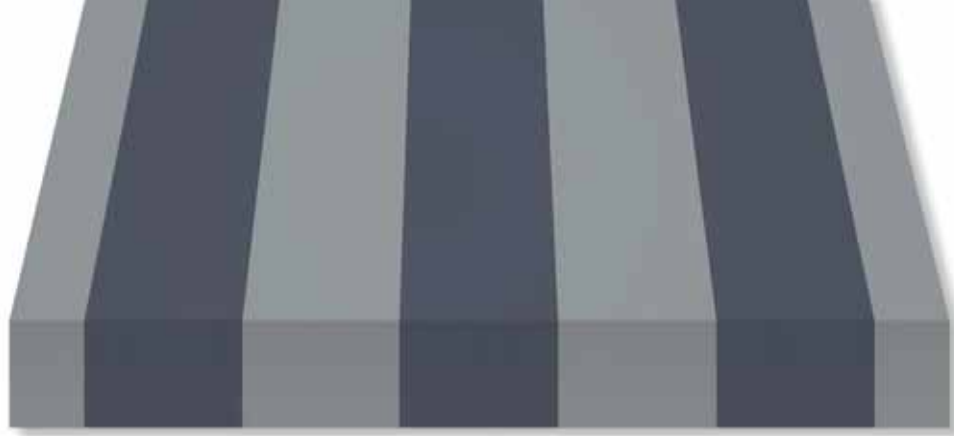
RECASENS USA
BCN  1886

P. 37





Fancy



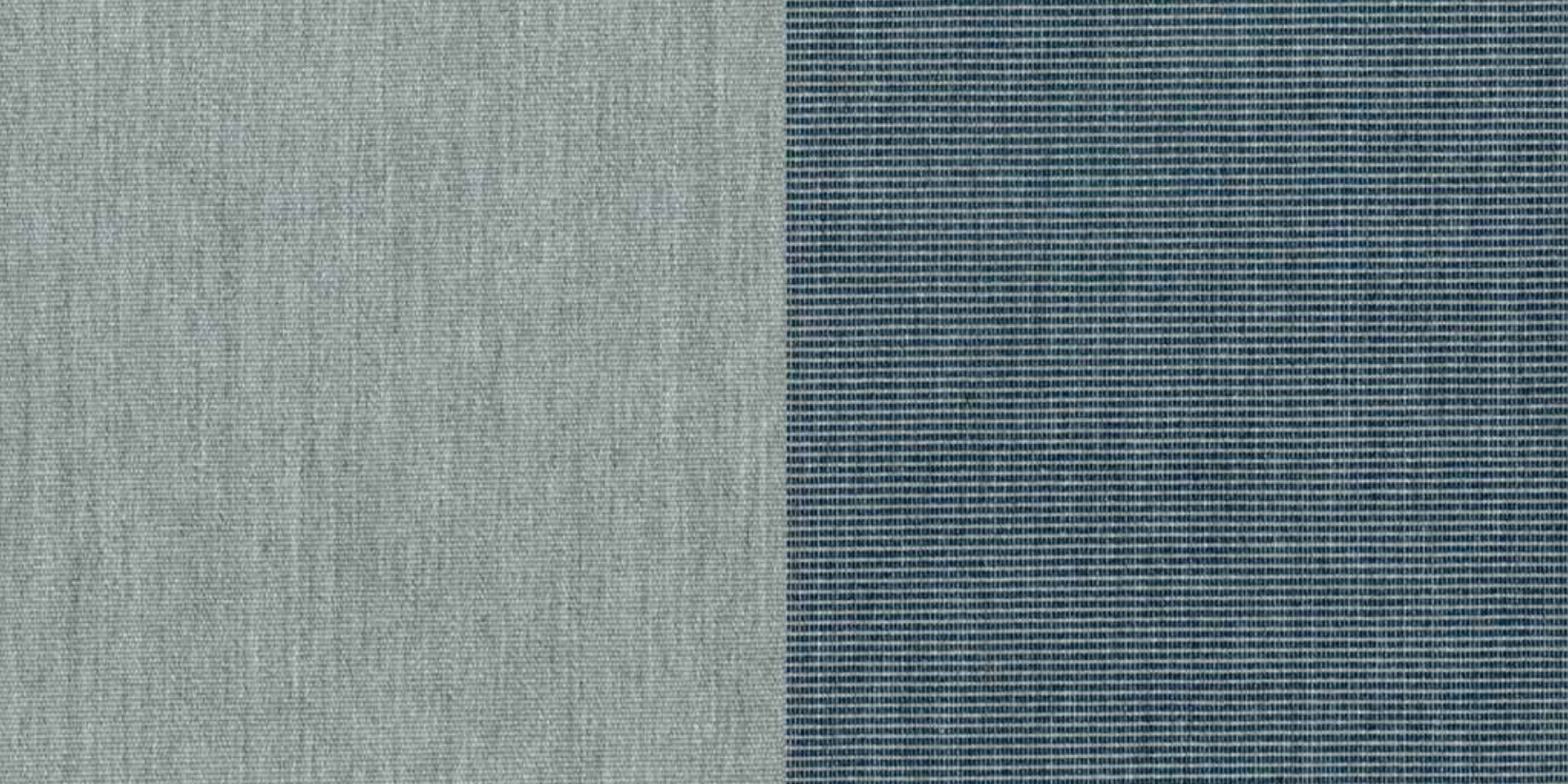
Rapport | *Repeat* : 40 cm | 15.7"
120 cm | 47"

R-356 RUPIT

recoril®
DESIGN LINE

RECASENS USA
BCN  1886

P. 38





Fancy



Rapport | *Repeat* : 29,3 cm | 11.5"
120 cm | 47"

R-445 TONA

recoril®
DESIGN LINE

RECASENS USA
BCN  1886





Fancy



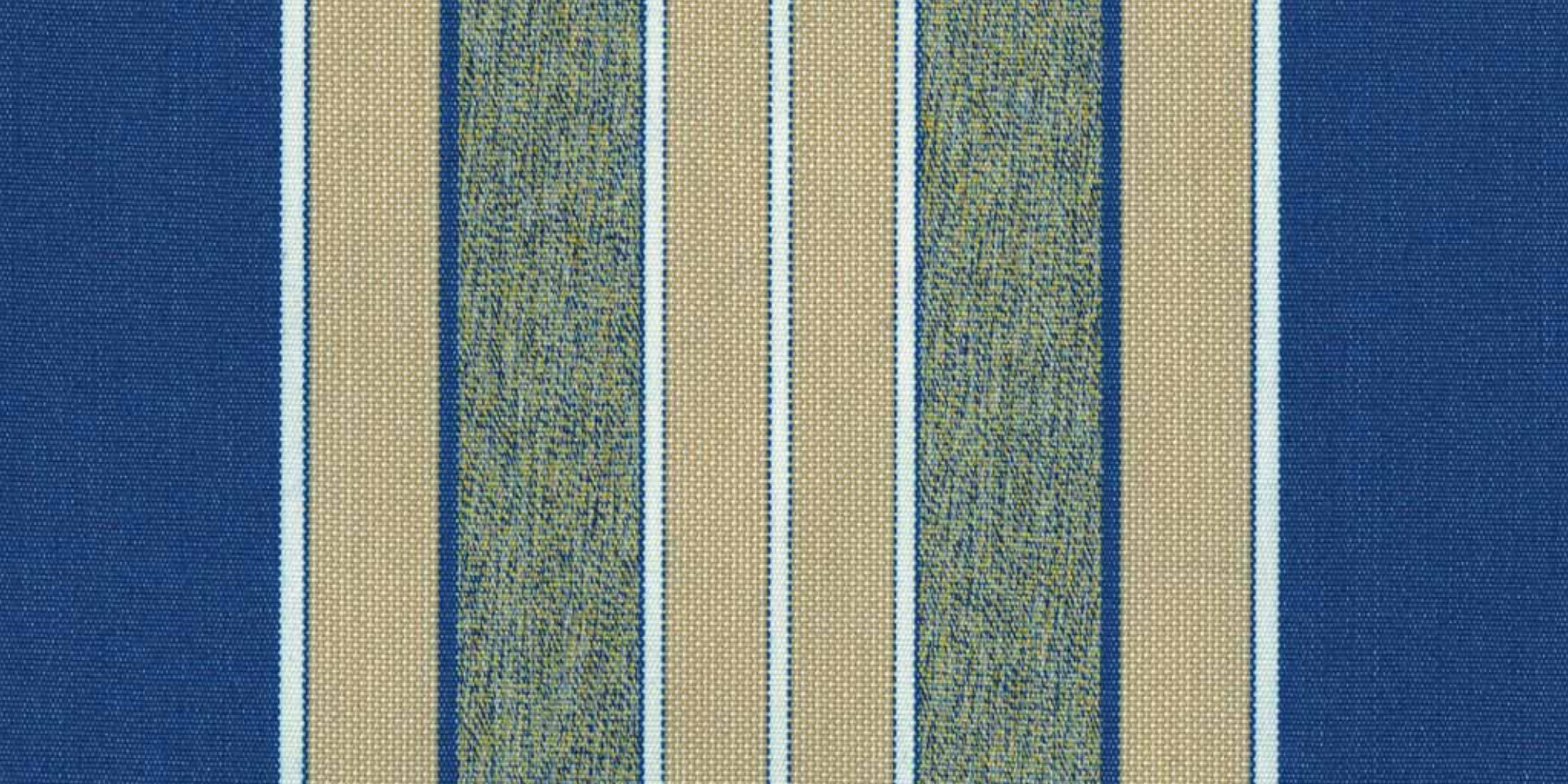
Rapport | *Repeat* : 23,5 cm | 9.2"
120 cm | 47"

R-447 REUS

recoril®
DESIGN LINE

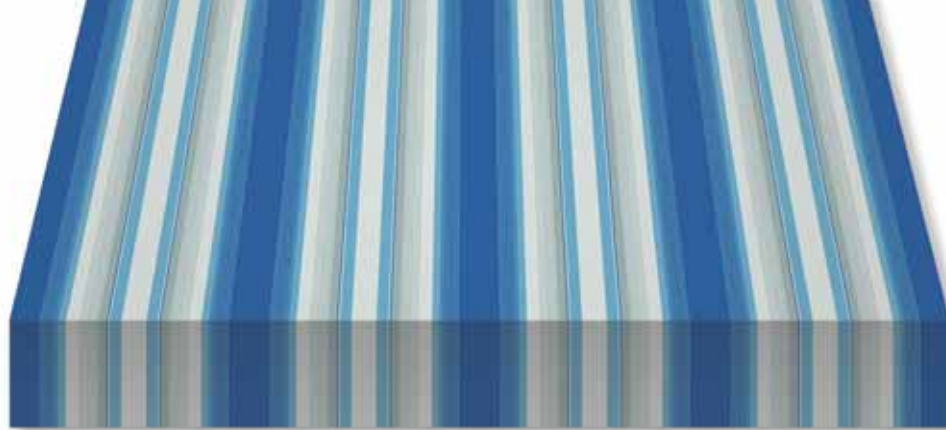
RECASENS USA
BCN  1886

P. 40





Fancy



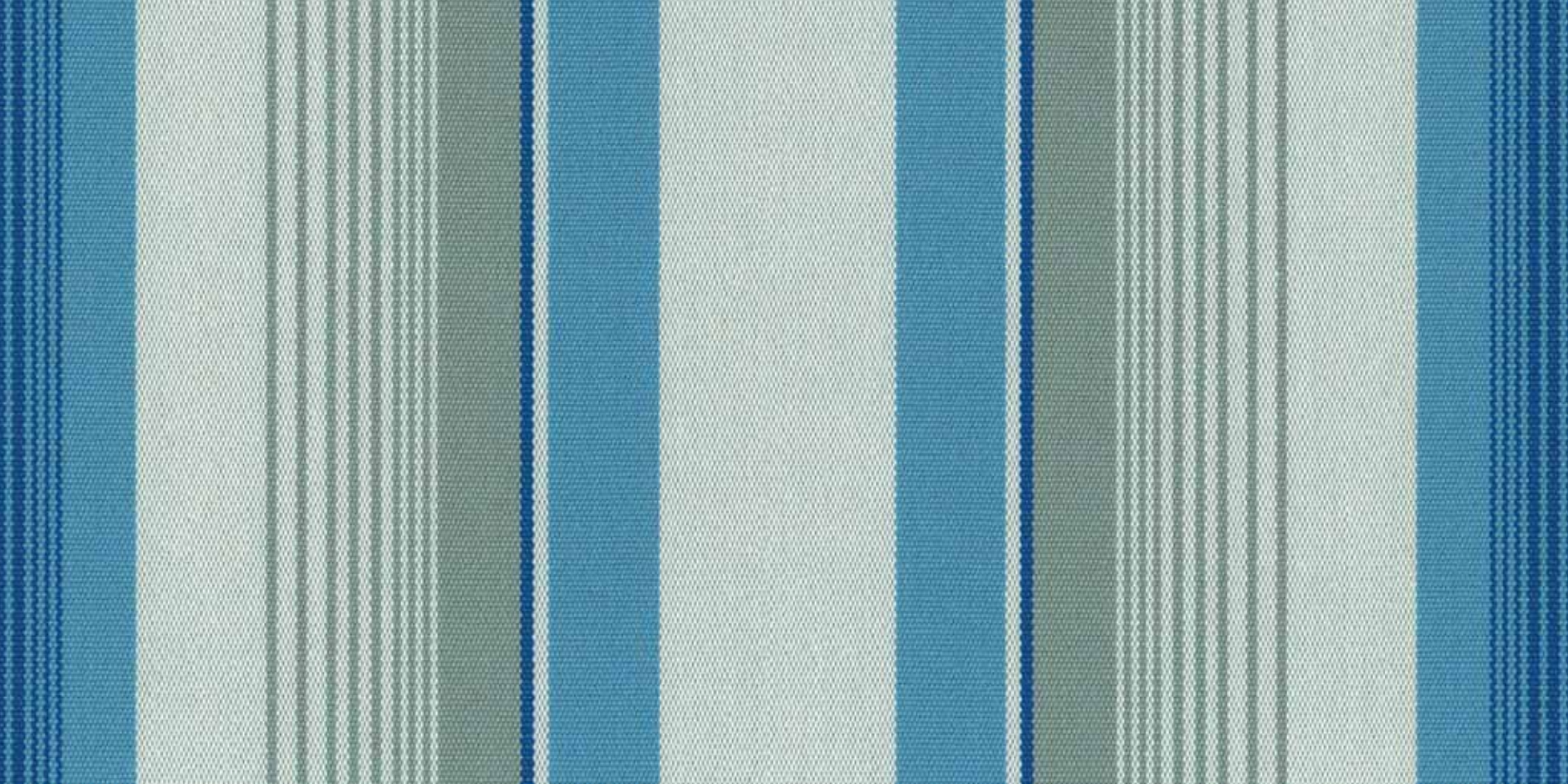
Rapport | *Repeat* : 29,3 cm | 11.5"
120 cm | 47"

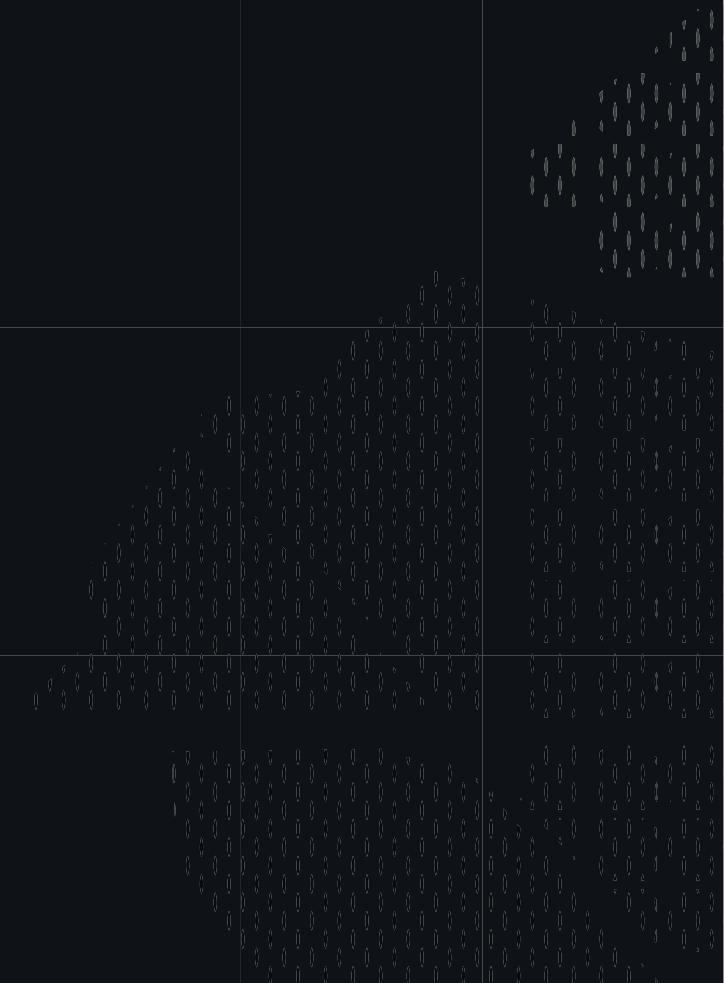
R-969 VALDESPINA

recoril®
DESIGN LINE

RECASENS USA
BCN  1886

P. 41





Classics

Rapport | Repeat : 16,9 cm | 6.6"
120 cm | 47"

R-166 FOIX

recoril®
DESIGN LINE

RECASENS USA
BCN  1886

P. 42





Fancy



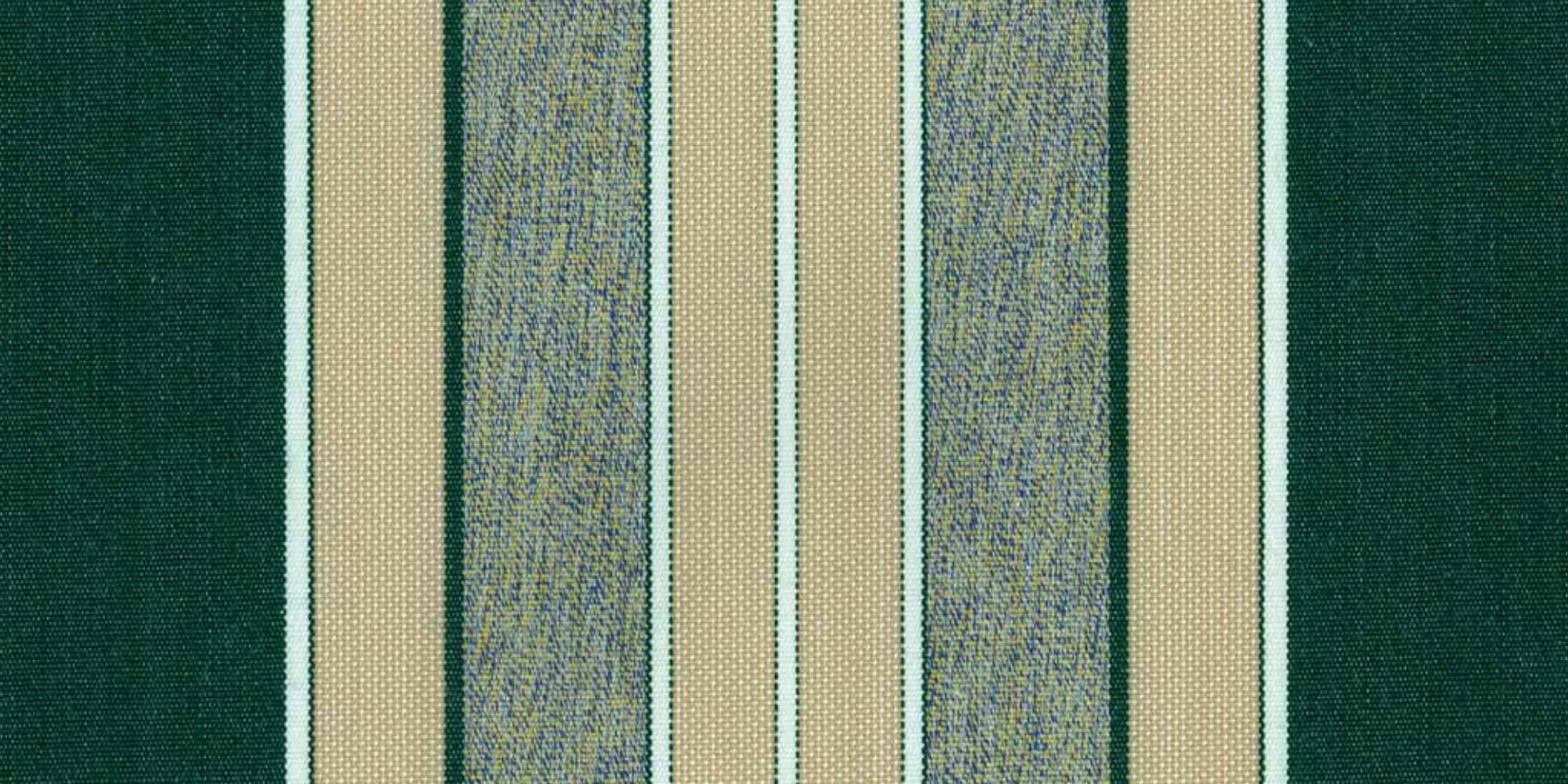
Rapport | *Repeat* : 23,5 cm | 9.2"
120 cm | 47"

R-411 MONTORNÉS

recoril®
DESIGN LINE

RECASENS USA
BCN  1886

P. 43





Fancy



Rapport | *Repeat* : 29,4 cm | 11.6"
120 cm | 47"

R-465 GRECIA

recoril®
DESIGN LINE

RECASENS USA
BCN H 1886





Fancy

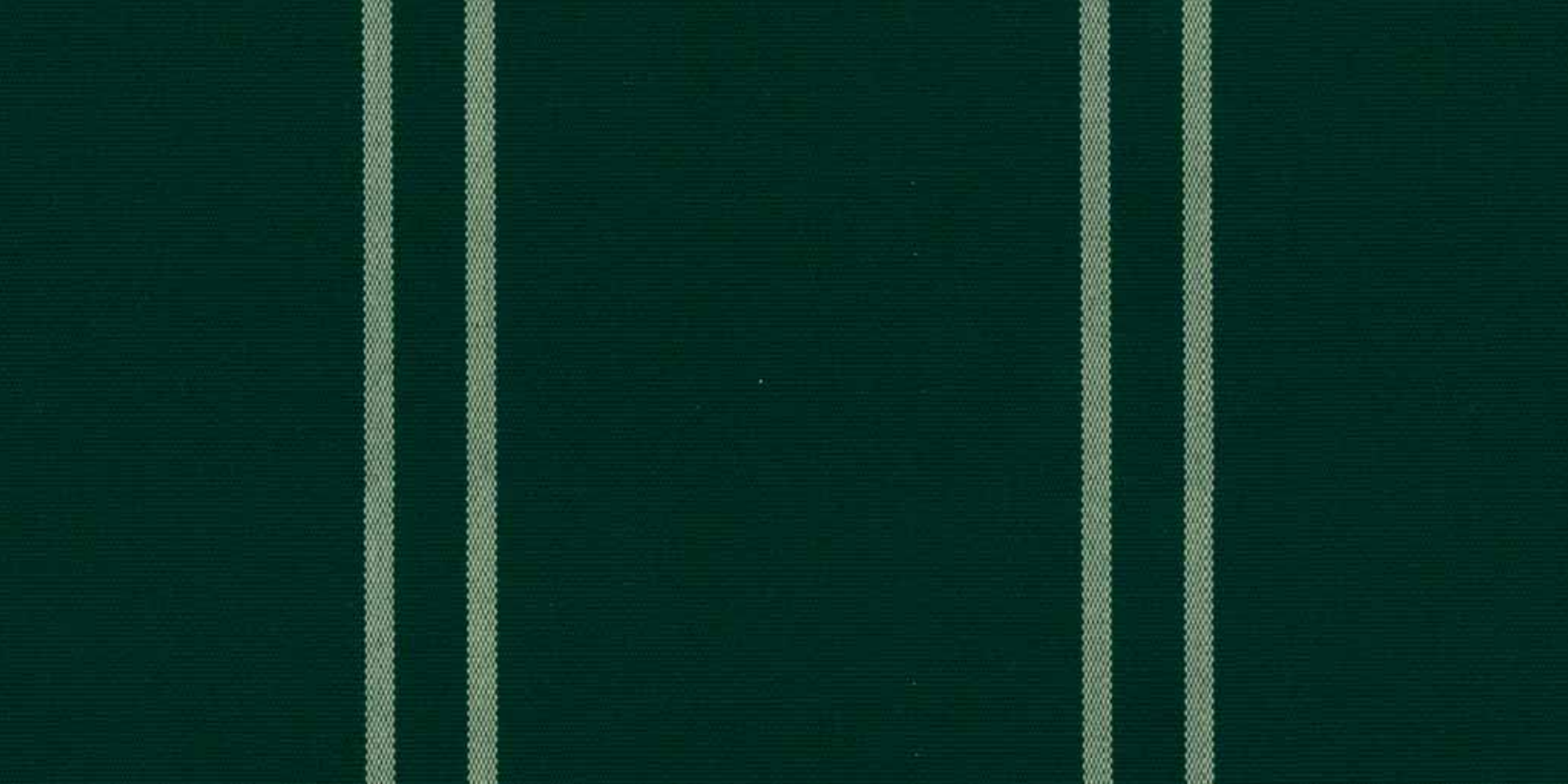


Rapport | *Repeat* : 9,8 cm | 3.8"
120 cm | 47"

R-707 ARIDANE

recoril®
DESIGN LINE

RECASENS USA
BCN H 1886





Fancy



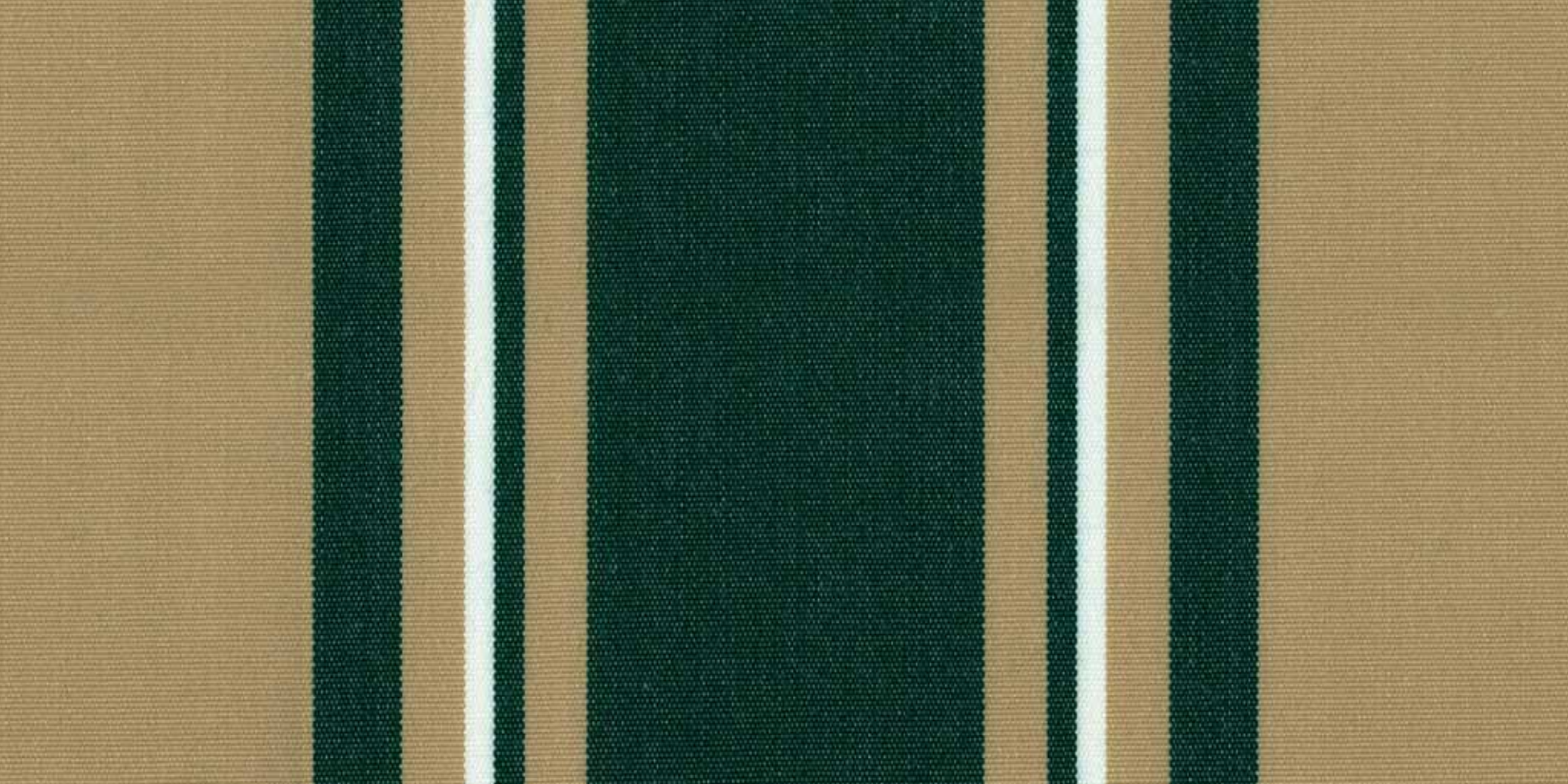
Rapport | *Repeat* : 23,4 cm | 9.2"
120 cm | 47"

R-804 MÉRIDA

rec^ocril[®]
DESIGN LINE

RECASENS USA
BCN  1886

P. 46





Fancy



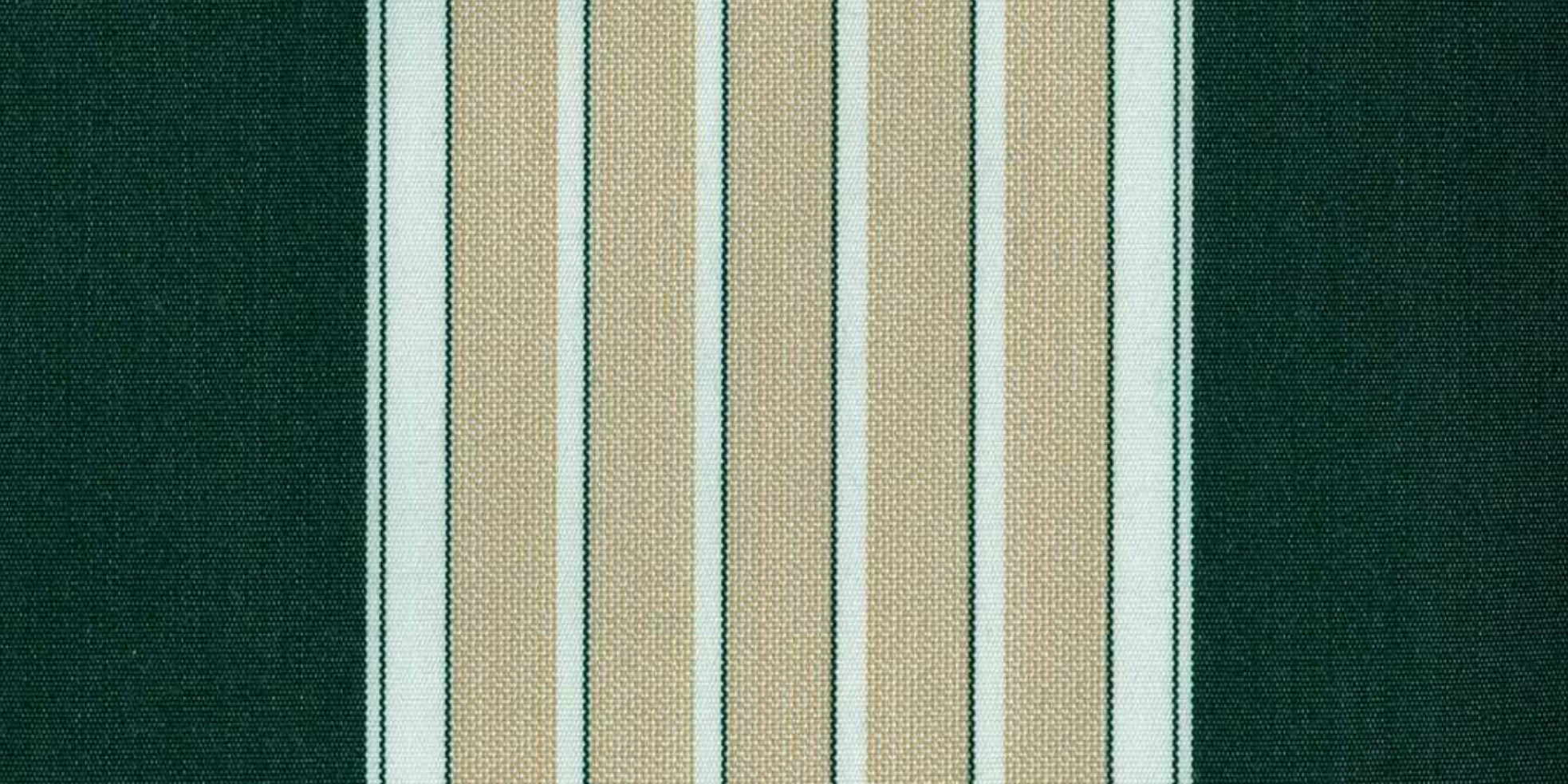
Rapport | *Repeat* : 23,4 cm | 9.2"
120 cm | 47"

R-808 OROTAVA

rec^ocril[®]
DESIGN LINE

RECASENS USA
BCN  1886

P. 47





Fancy



Rapport | *Repeat* : 19,4 cm | 7.6"
120 cm | 47"

R-854 JUMILLA

rec^ocril®
DESIGN LINE

RECASENS USA
BCN  1886

P. 48





Fancy



Rapport | *Repeat* : 14,7 cm | 5.8"
120 cm | 47"

R-960 ALMENARA

rec  ril®
DESIGN LINE

RECASENS USA
BCN  1886

P. 49

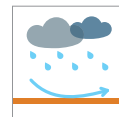


Recsystem^{FR}

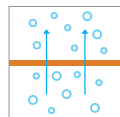
Recsystem FR is the ultimate fire-retardant fabric for awnings and shade. Woven with inherently fire-retardant modified acrylic yarn, it is certified to meet all relevant FR codes. A proprietary back coating makes Recsystem FR virtually waterproof when properly installed.



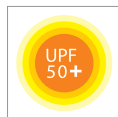
Flame retardant fabrics



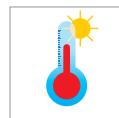
Virtually Waterproof



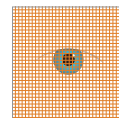
Permeability to steam



Excellent protection



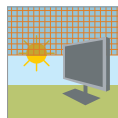
Thermal comfort



Privacy



Partial darkening



Glare control



FR-126 Linen



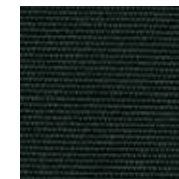
FR-156 Brown



FR-161 Grey



FR-164 Charcoal Grey



FR-103 Black



● FR-176 Red



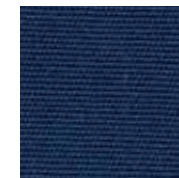
● FR-177 Burgundy



FR-102 Forest Green



FR-172 Blue



FR-170 Admiral Blue

● PREMIUM COLOR

Technical Specifications

FABRIC CHARACTERISTICS

Composition
Type of fabric

Modified solution-dyed acrylic fiber
Virtually waterproof acrylic (When properly used and installed)

Finish

Resin-coated weldable on 1 side.
Special "Infinity" treatment for awnings that repels water and dirt, creating an anti-stain and anti-mold barrier, while allowing the canvas to breathe.

Color range

10 colors

Use

Outdoor

TECHNICAL FEATURES

Weight

10 oz/yd²

Thickness

0,45 mm

Width

60"

Standard roll length

65 yards

Water column

≥ 1000 mm

Tensile strength (warp/weft)

140/60 daN/5 cm

Tear strength (warp/weft)

4/2 daN

Oil repellency

4

Water repellency

4

Fire classification

NFPA 701 (2015), CSFM Title 19, CPAI-84

Spray test

5

QUALITY MANAGEMENT SYSTEM

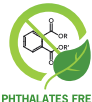
ISO 9001

SAFETY, HEALTH AND ENVIRONMENT

Ultraviolet protection factor - UPF

50+ (Excellent protection)

AS-NZS 4399



NORM

BS 7209

UNE-EN 12127

UNE-EN ISO 5084

UNE-EN 20811

UNE-EN ISO 13934-1

UNE-EN ISO 13937-2

UNE-EN ISO 14419

UNE-EN ISO 4920

ISO 9001

ADVANTAGES AND BENEFITS



Textile look
and feel



Wide range
of colors



Printable
fabrics



Suitable for marine
environments



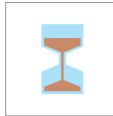
Easy to
maintain



Energy saving



Cost saving



Stands the test
of time



RECASENS
BCN 1886



The indicated technical values are average values allowing a tolerance of +/- 5%.

The technical specifications are provided for reference purposes only and are accurate as of the date printed. Information is subject to change as product improvements are made in response to market demands and technical advances. It is the customer's responsibility to verify that the data being referenced corresponds to the latest version of the product.

The client is responsible for the correct use of the product in accordance with the application for which it is designed and recommended. S.A. RECASENS is not responsible for the assembly and installation of the product. S.A. RECASENS is not responsible for the improper installation or use of its products, or for the failure to install or use its products in accordance with current laws and regulations.

Technical Specifications

FABRIC TYPE		
Name of Fabric	Recacril®	
Base Fabric	100% Solution Dyed Acrylic fibers	
CHARACTERISTICS		
Weight	9 oz. +/- 5%	
Standard Put Up	65.64 yards / 60 meters	
Finish	Fluorocarbon / Resin	
Finished Width	47" / 120 cm	
Styles	73 solids / 49 stripes	
Limited Warranty	10 years	
SPECIFICATIONS		TEST RESULTS
UV Resistance	1500 + hours	TEST METHOD
Abrasion Rating	40,000 Rubs	AATCC-16
Hydrostatic	40 cm	ASTM-4157
Puncture Strength	38 lbs	AATCC-127 Method B
		ASTM-751
	WARP / WEFT	
Tear Strength	11.5 lbs / 7.7 lbs	ASTM D-2261
Tensile Strength	287 lbs / 149 lbs	ASTM D-5034 Grab
Shrinkage	0.10% / 0%	Method 5804
Stretch	0% / 0%	ASTM D-2594

